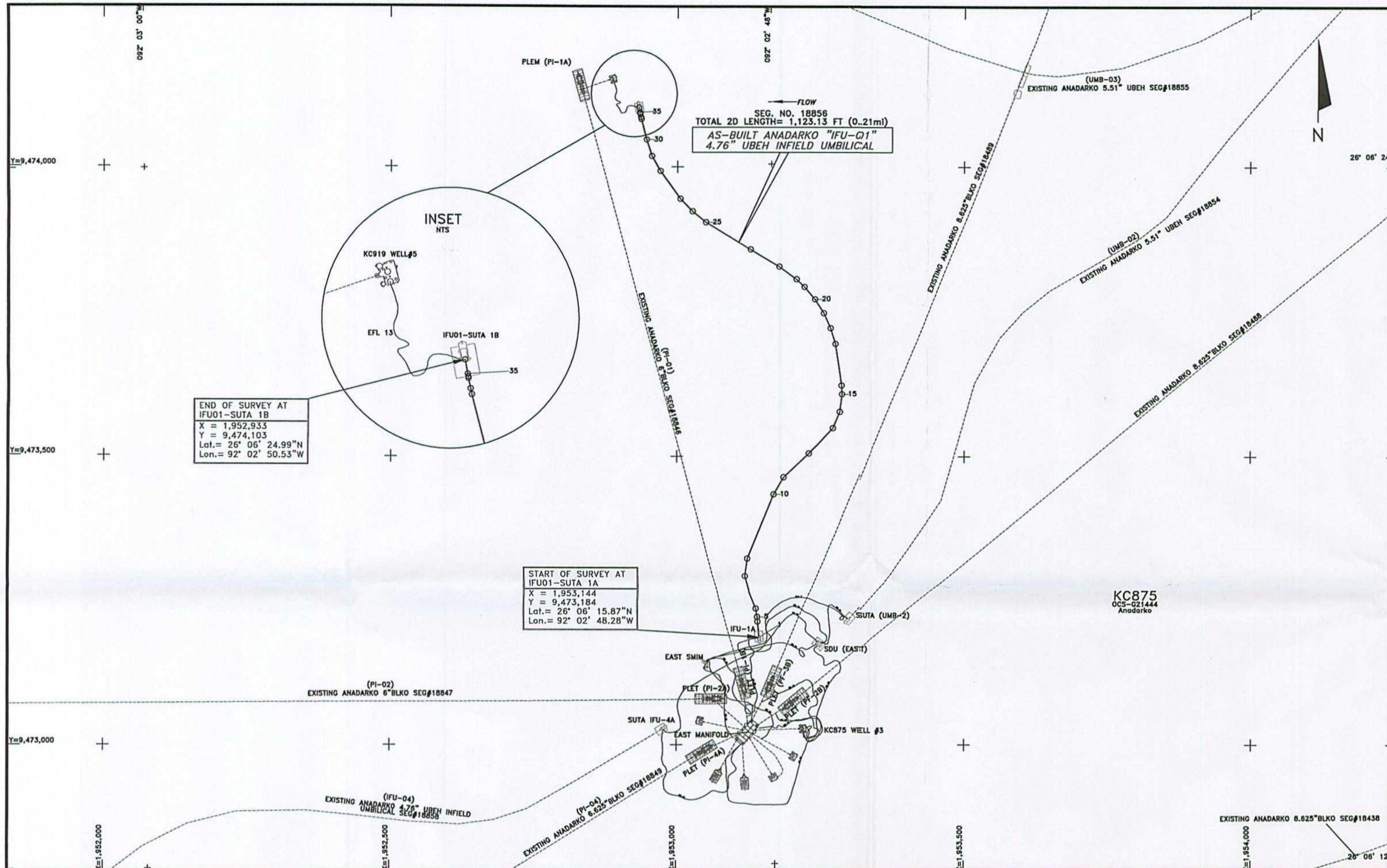


PLAN VIEW



END OF SURVEY AT IFU01-SUTA 1B
 X = 1,952,933
 Y = 9,474,103
 Lat. = 26° 06' 24.99"N
 Lon. = 92° 02' 50.53"W

START OF SURVEY AT IFU01-SUTA 1A
 X = 1,953,144
 Y = 9,473,184
 Lat. = 26° 06' 15.87"N
 Lon. = 92° 02' 48.28"W

SEG. NO. 18856
 TOTAL 2D LENGTH = 1,123.13 FT (0.21mi)
 AS-BUILT ANADARKO "IFU-01"
 4.76" UBEH INFIELD UMBILICAL

AS-BUILT ANADARKO 4.76" UBEH INFIELD UMBILICAL (IFU-01) SEGMENT#18856

POINT	X-COORDINATE	Y-COORDINATE	DESCRIPTION	POINT	X-COORDINATE	Y-COORDINATE	DESCRIPTION
1	1,953,144	9,473,184	IFU01-SUTA 1A	26	1,953,026	9,473,923	ROV FIX
2	1,953,143	9,473,193	FLANGE/START OF SPAN	27	1,953,005	9,473,945	ROV FIX
3	1,953,143	9,473,194	START OF BEND RESTRICTOR	28	1,952,970	9,473,993	ROV FIX
4	1,953,142	9,473,212	END OF BEND RESTRICTOR	29	1,952,955	9,474,019	ROV FIX
5	1,953,141	9,473,220	END OF SPAN	30	1,952,946	9,474,047	ROV FIX
6	1,953,139	9,473,234	ROV FIX	31	1,952,937	9,474,083	START OF SPAN
7	1,953,127	9,473,263	ROV FIX	32	1,952,936	9,474,086	START OF BEND RESTRICTOR
8	1,953,120	9,473,293	ROV FIX	33	1,952,935	9,474,092	END OF BEND RESTRICTOR
9	1,953,124	9,473,324	ROV FIX	34	1,952,935	9,474,093	END OF SPAN
10	1,953,169	9,473,435	SANDBAGS	35	1,952,934	9,474,095	FLANGE
11	1,953,186	9,473,464	ROV FIX	36	1,952,933	9,474,103	IFU01-SUTA 1B
12	1,953,230	9,473,505	ROV FIX				
13	1,953,272	9,473,548	ROV FIX				
14	1,953,284	9,473,576	ROV FIX				
15	1,953,288	9,473,607	ROV FIX				
16	1,953,287	9,473,622	SANDBAGS				
17	1,953,276	9,473,694	ROV FIX				
18	1,953,268	9,473,721	ROV FIX				
19	1,953,256	9,473,747	ROV FIX				
20	1,953,240	9,473,771	ROV FIX				
21	1,953,221	9,473,793	ROV FIX				
22	1,953,208	9,473,806	SANDBAGS				
23	1,953,178	9,473,828	ROV FIX				
24	1,953,128	9,473,857	ROV FIX				
25	1,953,050	9,473,904	ROV FIX				

2D LENGTH OF SURVEY POINTS 1 THROUGH 36:
 1,123.13' = 0.21 MILES

NOTES

- 1) UMBILICAL COORDINATES ARE THE POSITIONS OF THE R.O.V. (REMOTELY OPERATED VEHICLE) LOCATED AT THE POINTS USING VERIPOS LD2 ULTRA DGPS RECEIVING SPOTBEAM CORRECTIONS, VERIPOS STANDARD DGPS RECEIVING INMARSAT CORRECTIONS POSITIONING AND SONARDYNE FUSION LBL (LONG BASELINE) ACOUSTIC POSITIONING.
- 2) SURVEYED COORDINATES TRANSFORMED FROM NAD83 (GPS DATUM) NADCON VERSION 2.1.
- 3) THIS DRAWING IS NOT FOR NAVIGATION. PIPELINES AND FEATURES IN THE IMMEDIATE VICINITY ARE OBTAINED FROM BOEM (BUREAU OF OCEAN ENERGY MANAGEMENT) & BSEE (BUREAU OF SAFETY AND ENVIRONMENTAL ENFORCEMENT) DATABASE AND CLIENT PROVIDED DATA.
- 4) AS-BUILT SURVEY DATE: SEPTEMBER 12, 2013

LEGEND

- AS-BUILT 4.76" UBEH INFIELD UMBILICAL (IFU-01) SEG#18856
- EXISTING PIPELINES/UMBILICALS/FLYING LEADS/JUMPERS
- PROPOSED PIPELINES/UMBILICALS/FLYING LEADS/JUMPERS
- UTEC AS-LAID FLYING LEADS
- KC875 LEASE BLOCK BOUNDARIES
- PROPOSED STRUCTURES
- EXISTING STRUCTURES
- UTEC AS-FOUND/AS-BUILT STRUCTURES
- GEOGRAPHICAL TICKS
- UTM TICKS
- WELLS

GEODESY

Survey Datum: NAD 27
 Ellipsoid: Clarke 1858
 Projection: Universal Transverse Mercator ZONE 15N
 Longitude of Central Meridian: 93°W
 False Easting (m): 500 000
 False Northing (m): 0
 Scale Factor of Central Meridian: 0.99960
 Units: US Survey Feet

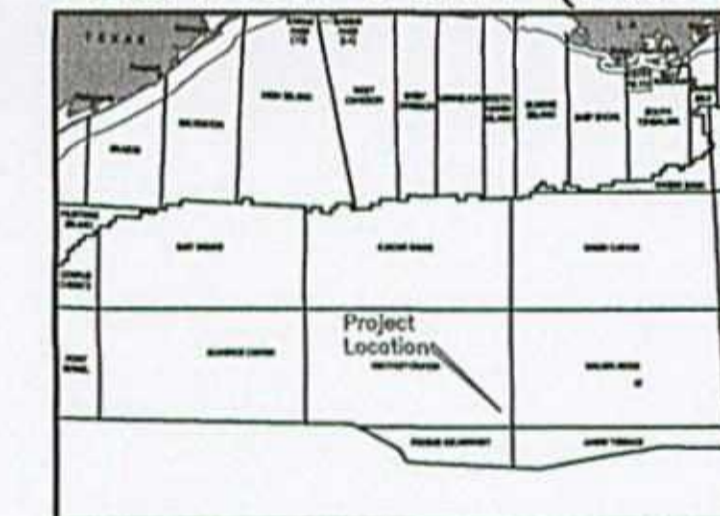
CERTIFIED CORRECT AS TO THE HORIZONTAL POSITION OF THE AS-BUILT UMBILICAL BASED ON THE SURVEY METHODS NOTED.



Nathan J. Eby 09/08/14
 NATHAN EBY, R.P.L.S.
 TEXAS REG #6198

This document may only be used for the purpose for which it was commissioned and in accordance with the terms of engagement for that commission. Unauthorized use of this document in any form whatsoever is undertaken entirely at the user's risk.

LOCATION PLAN (N.T.S)

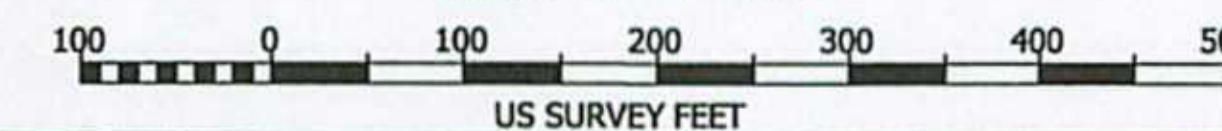


7240 BRITTMOORE RD. SUITE 110
 HOUSTON, TEXAS 77041
 Tel 713-984-8688
 Fax 713-984-8683
 Website www.utecsurvey.com

LUCIUS DEVELOPMENT PROJECT
 AS-BUILT ANADARKO 4.76" UBEH INFIELD UMBILICAL (IFU-01)

SEGMENT#18856
 KEATHLEY CANYON BLOCK 875
 GULF OF MEXICO

Scale 1" = 100'



Rev. No.	Date	Comment	Interpr.	Checked	Appr.
0	09/08/14	ISSUED AS FINAL	VR	EG	JL
A2	08/14/14	ISSUED FOR CLIENT COMMENTS	VR	EG	JL
A1	07/24/14	ISSUED FOR CLIENT COMMENTS	VR	EG	JL

Survey Dates: September 12, 2013		Survey Vessel: IRON HORSE	
UTEC Ref. No. 601W-12-025	UTEC Drawing No. 601W-12-025-002	Sheet 001	Of 001
Plot Size ANSI D			