

UNITED STATES GOVERNMENT
MEMORANDUM

October 22, 2002

To: Public Information (MS 5034)
From: Plan Coordinator, FO, Plans Section (MS 5231)

Subject: Public Information copy of plan

Control # - S-06039
Type - Supplemental Development Operations Coordinations Document
Lease(s) - OCS-G02839 Block - 352 West Cameron Area
OCS-G23762 Block - 343 West Cameron Area
Operator - Petsec Energy Inc.
Description - Well 18
Rig Type - JACKUP

Attached is a copy of the subject plan.

It has been deemed submitted as of this date and is under review for approval.

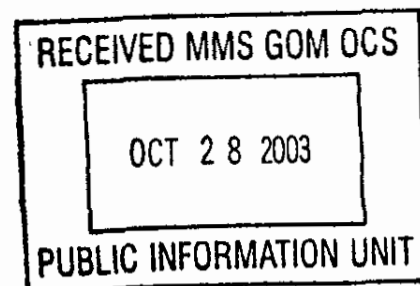
Elmo Cooper
Elmo Cooper
Plan Coordinator

Site Type/Name	Botm Lse/Area/Blk	Surface Location	Surf Lse/Area/Blk
FIXED/A		2943 FNL, 3070 FWL	G02839/WC/352
WELL/18	G23762/WC/343	2943 FSL, 3070 FWL	G02839/WC/352

ISS OCT 25 9:49 AM '02

NOTED - SCHEXNAILDRE

SCANNED



Appendix A Contents of Plan

- (A) **Description, Objectives and Schedule:** In accordance with 30 CFR 250.204(a)(b), Petsec Energy Inc. proposes to conduct supplemental development drilling and production activities at West Cameron Block 343, OCS-G 23762. Plans are to drill one additional well (Location F) in Block 343 from existing Platform "A", West Cameron Block 352, OCS-G 2839. No well testing/flaring are planned at this time. Wells will be drilled and completed in accordance with CFR 30 Part 250 Subpart D & E. Temporary or permanently abandoned wells, if required, will be done in accordance with CFR 30 Part 250 Subpart G. Following is a schedule of proposed activities and approximated time requirements:

- October 30, 2002.....Begin drilling Location "F"
- November 12, 2002Complete drilling activities
- Approximate time required..... 15 days

- (B) **Location:** West Cameron Block 352 "A" Structure (surface location for Block 343 development activities) is located approximately 51.5 statute miles southeast of Sabine Pass at the Texas/Louisiana inlet (nearest land). A vicinity map referencing the coast and location of Block 352 is included as an attachment to Appendix A.

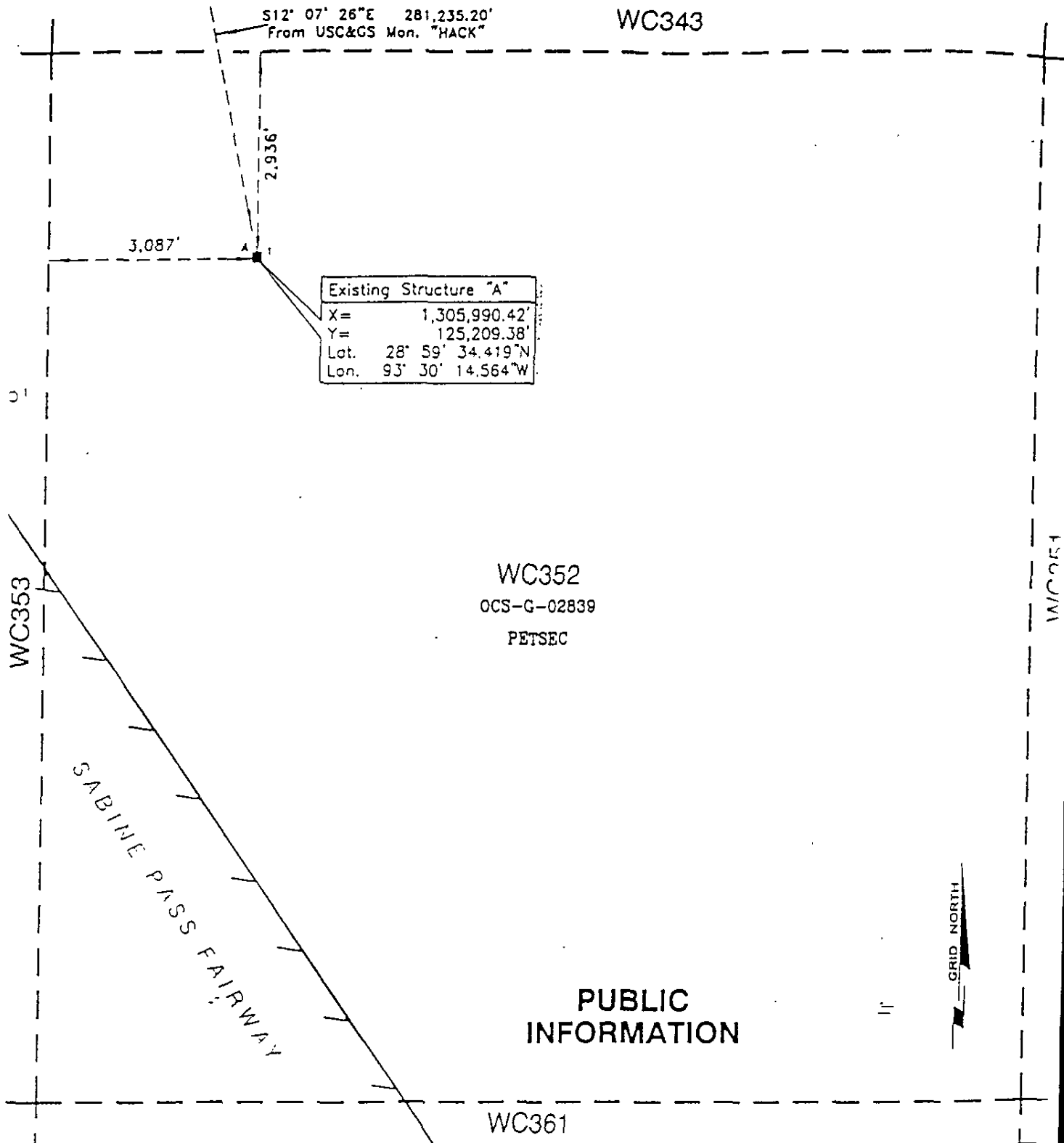
(C) **Production Facility:**

W. Cameron Block 352 Platform A is an eight-pile multi-deck structure located in approximately 74' of water. Platform is equipped with all necessary equipment for production/processing of hydrocarbons. Curbs, gutters and drains are installed in all deck areas in a manner to collect all contaminants and pipe them to a sump which prevents discharge of pollutants into the Gulf of Mexico. No additional equipment and/or modifications to the structure are anticipated.

- (D) **Drilling Unit:** The Rowan Middletown, a cantilever type jack-up rig (already on location) will be utilized for proposed drilling activities. The rig is equipped with numerous safety and environmental features, such as, curbs, gutters, drip pans and drains to collect all contaminants not authorized to discharge. Safety and pollution prevention features will include well control and blowout prevention equipment as described in 30 CFR 250.406 and 30 CFR 250.300.

Attachments to Appendix A

- A vicinity map of Block 352 (surface location of activities) relative to the Louisiana/Texas Coast.
- Proposed surface location of activity area.
- Base map of activity area.



I HEREBY CERTIFY THAT THE ABOVE STRUCTURE LOCATION IS CORRECT. <i>Lionel J. Cormier</i> REG. PROFESSIONAL LAND SURVEYOR NO. 4401 STATE OF LOUISIANA				PETSEC ENERGY INC.	
				EXISTING LOCATION OCS-G-02839 STRUCTURE "A" BLOCK 352 WEST CAMERON AREA GULF OF MEXICO	
FUGRO CHANCE INC.				SCALE 0 2,000' IN FEET	
GEODETTIC DATUM: NAD 1927 PROJECTION: LOUISIANA SOUTH GRID UNITS: US SURVEY FEET		Job No.: 02-1374 Date: 5/9/02 Drawn: RDT		Chart: 01: 1	
Printed 5/17/03		Dwgfile: C:\CADB\BASE\WPERMIT\LASOUTH\WC\PERMIT\352STR-A			

BEST AVAILABLE COPY

Appendix B
General Information

- (A) **Contact:** The following person(s) should be contacted pertaining to questions and/or additional data requirements.

Norman M. Faker
Vice President, Operations
Phone: (337) 989-1942, ext. 210
Fax: (337) 989-7271
E-mail: nfakier@petsec.com

Prent H. Kallenberger
Vice President, Exploration
Phone: (337) 989-1942, ext. 214
Fax: (337) 989-7271
E-mail: prentk@petsec.com

Mark Gannaway
Project Geologist/Geophysicist
Phone: (337) 406-8555
Fax: (337) 406-8556
E-mail: averex1@aol.com

James Wingo
Project Geologist/Geophysicist
Phone: (337) 993-9297
Fax: (337) 406-8556
E-mail: wingoja@aol.com

Rouven Fontenot
Regulatory Consultant
Phone: (337) 237-4373, ext. 115
Fax: (337) 234-1805
E-mail: rouven@commengineering.com

- (B) **Project Name:**

Development Operations Coordination Document (Supplemental)
West Cameron Block 343, OCS-G 23762
Location "F"

(F) Onshore base and support vessels:

The onshore support base for development activities at West Cameron Block 343 will be located in Cameron, Louisiana. West Cameron Block 352 "A" Structure (surface location for Block 343 activities) is located approximately 54 statute miles southwest of the Cameron shore base.

Existing facilities in Cameron, Louisiana will be utilized for operations at West Cameron Block 343. These facilities consist of office and warehouse space, dock facilities, dispatchers, and other services, which are manned 24 hours a day.

Helicopters, crew boats, supply boats and utility boats will be utilized to transport personnel and supplies to proposed surface location at West Cameron Block 352. It is anticipated that the following will be utilized for transporting supplies and personnel.

- Crew-boat – Estimate 3 - 4 round trips per week.
- Supply boat – Estimate 4 - 5 round trips per week.
- Helicopter – Emergency evacuation only.

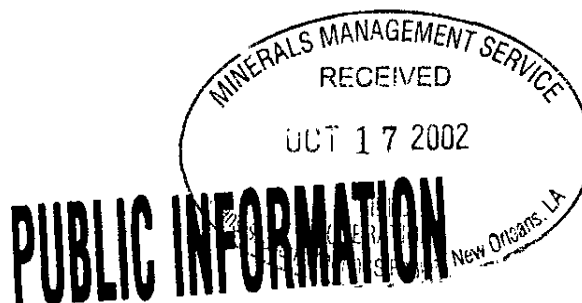
The route utilized by each mode of transportation will normally be in a straight-line from shore base at Cameron to West Cameron Block 352 Platform "A".

(G) Lease Stipulations: Lease OCS-G 23762, West Cameron Block 343 carries no stipulations.

(H) Socioeconomic information: The utilization of an existing platform and shore base is currently planned. No new construction and/or addition of construction workers will be required, hence no socioeconomic information to report.

Attachments to Appendix B:

- None.



**Development Operations Coordination Document
(Supplemental)
West Cameron Area, West Addition
Block 343 OCS-G 23762
Location "F"**

FOR:

**Petsec Energy Inc.
4023 Ambassador Caffery, Suite 550
Lafayette, LA 70503
(337) 989-1942**

Date Submitted:

October 16, 2002

**CONTROL No. 5-6039
REVIEWER: Elmo Cooper
PHONE: (504) 731-3083**

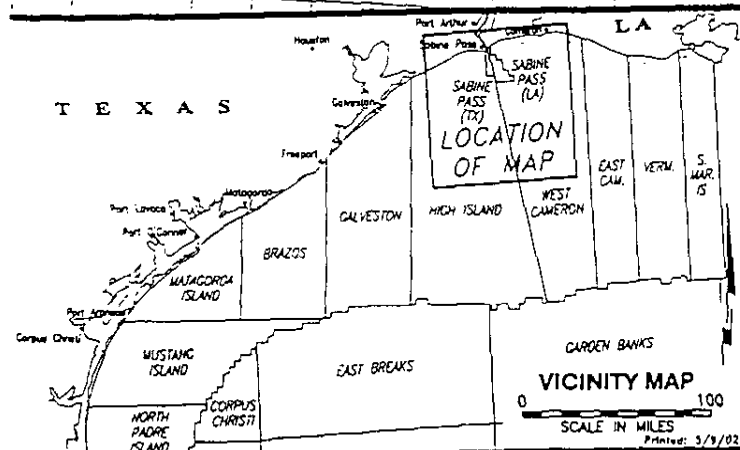
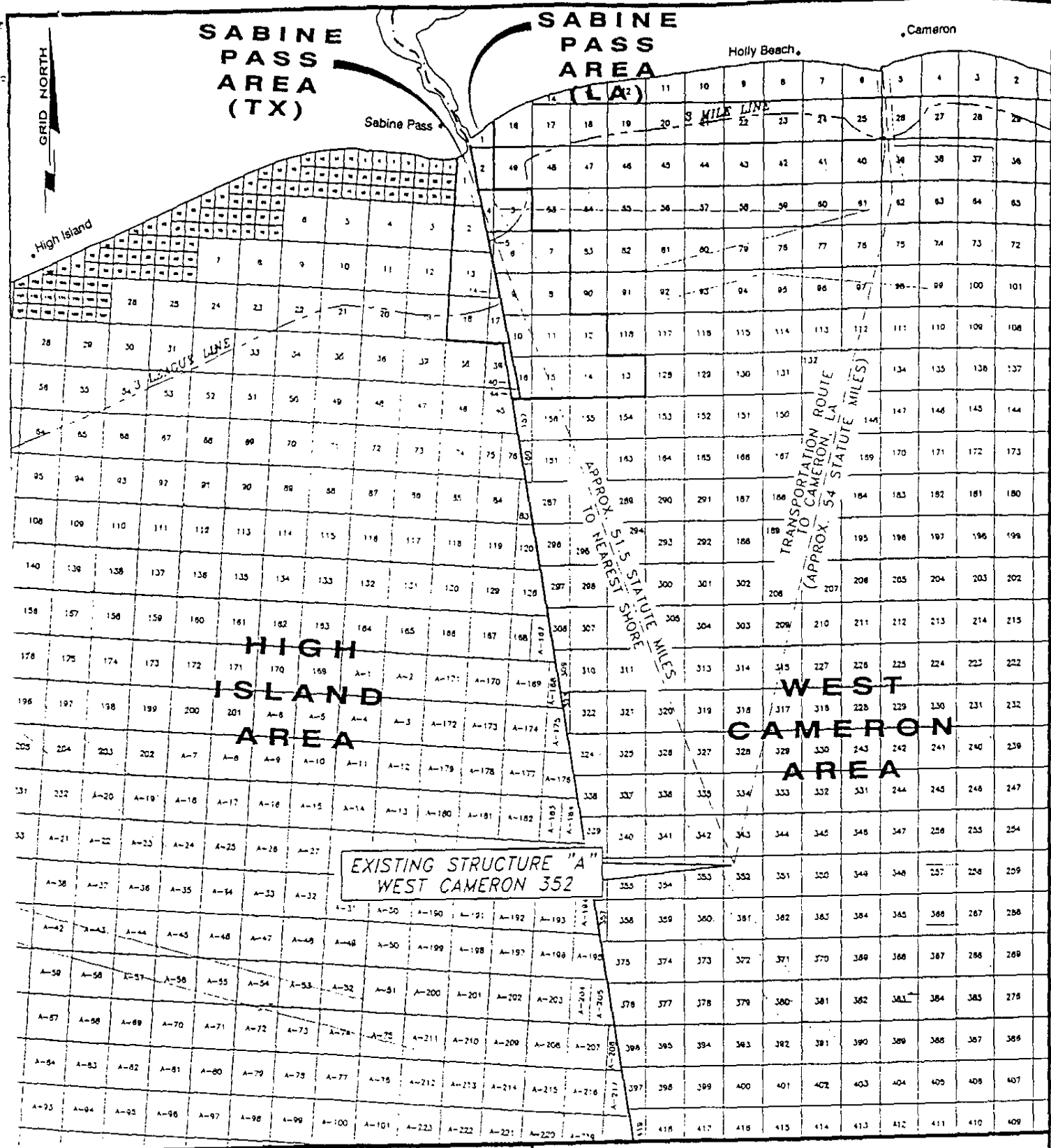
BEST AVAILABLE COPY

**Development Operations Coordination Document
(Supplemental)**

**Petsec Energy Inc.
W. Cameron Block 343
OCS-G 23762 (Location F)**

Table of Contents

	<u>Page</u>
Appendix A – Contents of Plan	1
Appendix B – General Information	2-4
Appendix C – Geological, Geophysical, and H ₂ S Information	5
Appendix D – Biological Information	6
Appendix E – Wastes and Discharges Information	7
Appendix F – Oil Spill Response and Chemical Product Information	8
Appendix G – Air Emissions Information	9
Appendix H – Environmental Information	10
Appendix I – CZM Consistency Certification Format	11
Appendix J – Plan Information Form.....	<u>12</u>



PETSEC ENERGY INC.

VICINITY MAP

**BLOCK 352
WEST CAMERON AREA
GULF OF MEXICO**

FUGRO CHANCE INC.

GEODETIC DATUM: NAD 1927
PROJECTION: LOUISIANA SOUTH
GRID UNITS: US SURVEY FEET

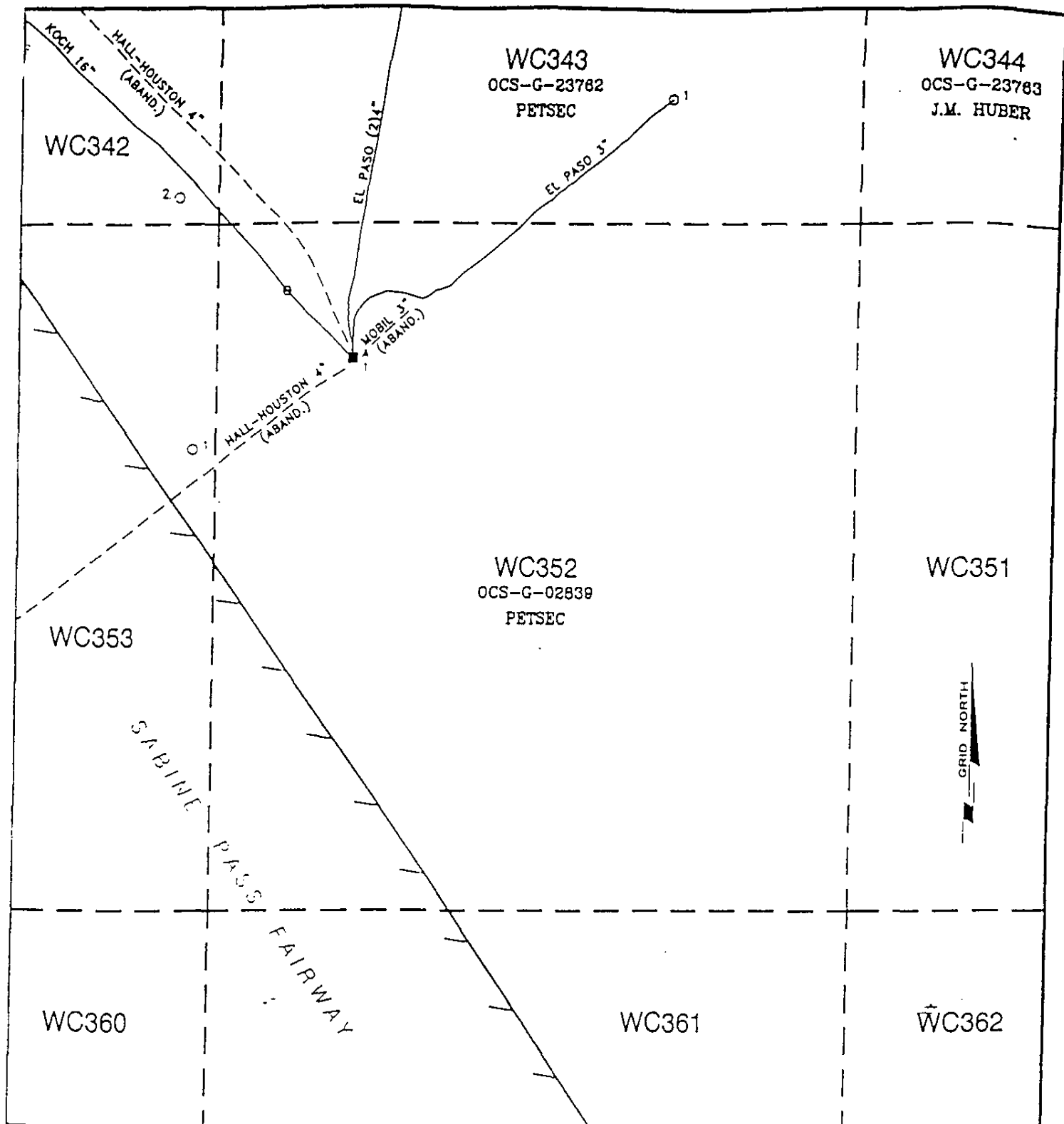
SCALE IN FEET 0 50,000'

Job No.: 02-1374 Date: 5/9/02 Drawn: RDT

Chart: 01: 1 1

Dwgfile: H:\2002\021374\CAO\MARINE\021374VIC

BEST AVAILABLE COPY



IMPORTANT - PLEASE NOTE

- 1) THIS MAP IS FURNISHED TO PETSEC ENERGY INC. FOR ITS EXCLUSIVE USE, AND PETSEC ENERGY INC. AGREES THAT THE MAP WILL NOT BE TRANSFERRED OR CONVEYED TO ANY PERSON OR ENTITY OTHER THAN ITS PARTNERS AND CONTRACTORS FOR ANY PURPOSE OTHER THAN USE IN CONNECTION WITH SERVICES PERFORMED FOR PETSEC ENERGY INC.
- 2) THIS MAP HAS BEEN PREPARED ON THE BASIS OF INFORMATION DERIVED FROM "AS-BUILT" DRAWINGS AND SURVEYS PREPARED BY OTHER PERSONS AND ENTITIES; MOREOVER, THE SERVICES PROVIDED IN THE PREPARATION OF THIS MAP INVOLVE INTERPRETATION, JUDGEMENT AND OPINION BASED UPON INFERENCES FROM INDIRECT DATA AND ON SOURCES OF INFORMATION SUPPLIED BY OTHER PERSONS OR ENTITIES FOR WHOM JOHN E. CHANCE & ASSOCIATES, INC. IS NOT RESPONSIBLE. BY REASON OF THE FOREGOING PETSEC ENERGY INC. AGREES BY ITS ACCEPTANCE AND USE OF THIS MAP THAT JOHN E. CHANCE & ASSOCIATES, INC. HAS NO RESPONSIBILITY OR LIABILITY FOR THE CONSEQUENCES OF ANY INACCURACY OR DEFICIENCY IN THE MAP.
- 3) THIS MAP DOES NOT ATTEMPT TO SHOW THE LOCATION OR EXISTENCE OF ANY COMMUNICATION CABLES OR OF PIPELINES AND OBJECTS NOT DEPICTED ON THE INFORMATION REVIEWED.
- 4) JOHN E. CHANCE & ASSOCIATES, INC. WAS NOT APPRISED OF THE PRECISE PURPOSE FOR WHICH THIS MAP WOULD BE UTILIZED. JOHN E. CHANCE & ASSOCIATES, INC. MAY HAVE PERFORMED A SHALLOW HAZARD SURVEY, HOWEVER, THIS MAP SHOULD NOT BE DEEMED TO CONSTITUTE RECOMMENDATIONS, EXPLICIT OR IMPLICIT, FOR ANY USE OR PURPOSE WHATSOEVER.

Printed: 3/9/02

PETSEC ENERGY INC.

BASE MAP

BLOCK 352
WEST CAMERON AREA
GULF OF MEXICO

FUGRO CHANCE INC.



GEODETIC DATUM: NAD 1927
PROJECTION: LOUISIANA SOUTH
GRID UNITS: US SURVEY FEET

SCALE 0 3,000'
IN FEET

Job No.: 02-1374	Date: 5/9/02	Drawn: RDT	Chart: Of:
Dwg/Re: H:\2002\021374\CAD\MARINE\021374BASE			

BEST AVAILABLE COPY

(C) Production rates & life of reserves:

<u>Locations</u>	<u>Life of Reserves</u>	<u>Anticipated Production</u>
W.C. 343 Loc. F	440 Days	4.4 BCF & 10 MMCFD

(D) New or unusual technology: The proposed activities will be completed with the guarantee of the following items:

- 1) The most reliable and safest technologies will be utilized throughout the project. This includes meeting all applicable requirements for equipment types, general project layout, safety systems and equipment monitoring systems.
- 2) All operations will be covered by Petsec's Regional Oil Spill Response Plan (OSRP), which was approved by Minerals Management Service on June 3, 2002. Activities proposed under this Development Plan will be covered by the Regional OSRP. This OSRP is the guide, which Petsec would follow in case of an oil spill.
- 3) All applicable Federal, State and local permit requirements regarding air emissions, water quality and discharges for the proposed activities, as well as any other permit conditions, will be complied with.

Bonding information: A supplemental bond in the amount of \$150,000 (to cover Supplemental Location F activities) will be submitted to the Minerals Management Service Adjudication Office prior to October 30, 2002.

Appendix D Biological Information

Chemosynthetic Information

Statement: Water depths at proposed surface activity area (W. Cameron Block 352 "A" Structure) is well under the 400-meter water depth at which Chemosynthetic Communities are likely to occur. Amplitude extractions at the seafloor did not indicate any significant high amplitude seafloor returns indicative of features associated with rapid hydrocarbon seepage, i.e. authigenic carbonate hard-grounds, mud volcanoes, and/or pock marks associated with near-surface gas-charged sediments.

In addition, the Chemosynthetic Ecosystems Study, Volume II MMS 95-0021 and subsequent research conducted in the area suggest that chemosynthetic communities are not likely to occur in this specific portion of the West Cameron Area.

Topographic Features Information

Statement: There are no Topographic Features Lease Stipulation or any identified biologically sensitive features in the immediate vicinity of West Cameron Block 343 project area.

Live Bottom (Pinnacle Trend) Information

Statement: W. Cameron Block 343 does not carry a Live Bottom Lease Stipulation and is not one of numerous blocks associated with the pinnacle trend.

Attachments to Appendix D:

- None

Appendix E
Waste and Discharges Information

Discharges during Development Drilling phase: Attached is anticipated discharges during Petsec Energy Inc. drilling of Location "F" (Well A-18). Drilling of the production interval will be conducted with zero discharge. Drill cuttings and drilling fluids will be contained and shipped to shore for proper discharge.

Attachments to Appendix E:

- Waste and Discharges Information

Appendix E
Wastes and Discharges Information

A. DRILLING MUD AND CUTTINGS

1. QUANTITY OF DISCHARGE FOR EACH LOCATION:

WELL NO.	A-18			
WATER DEPTH	74			
DAYS ON WELL	15			
	HOLE SIZE OR DP SIZE	DEPTH FROM RKB	VOLUME CUTTINGS (BBLs)	VOLUME MUD (BBLs)
	-	-	-	-
DRIVE PIPE	20	380	119	594
COND	10.75	800	71	354
SURFACE	7.625	6902	517	2068
INTERMED.	0	0	0	0
PROD. LINER	0	0	0	0
			-	-
	<u>Total For Location 15:</u>		<u>707</u>	<u>3016</u>

Total For A-18:	707	3016
------------------------	------------	-------------

Appendix E
Wastes and Discharges Information

Wastes and Discharges Information (cont'd)

C. Sanitary and Domestic Waste

1. Quantity of Discharge

Sanitary waste and domestic wash water

Sanitary Waste (15 days)..... 750 BBL

Food Solids (15 days)..... 15 BBL

2. Discharge Rate

Sanitary waste & domestic wash water.....50 BBL/day

Food solids..... 1 BBL/day

3. Composition of Discharges

Sanitary waste and domestic wash water is composed of sanitary waste and shower and sink water. Food solids consist of leftover food scraps.

4. Basis For Determination of Quantity and Rate of Discharge

Sanitary waste and domestic wash water from Red Fox Unit treatment: capacity .5 to 1.2 bbls/man/day. Assume 50 men 1 bbl/day. Food solids are estimated at 1 bbl/day.

5. Plans for Treatment Storage Transportation and Disposal

Sanitary waste and domestic wash water will be processed through U. S. Coast Guard approved sanitary waste treatment unit prior to discharge.

Food solids will be segregated from metals, paper and plastic prior to discharge. Food solids will be comminuted in accordance with 33 CFR

D. General Trash and Used Engine Oil

1. Quantity of Discharges - Not Applicable

2. Discharge Rate - Not Applicable

3. Composition of Discharges - Not Applicable

4. Basis for Determination of Quantity of Discharge - Not Applicable

5. Plans for Treatment Storage Transportation and Disposal

General trash is compacted containerized and brought to shore for disposal at a municipal facility. Used engine oil is containerized in a U. S. Coast Guard approved container, brought to shore and picked up by an oil re-claimer.

BEST AVAILABLE COPY

Appendix E
Wastes and Discharges Information

Waste and Discharge Information (cont'd)

2. Discharge Rate

Discharge rate of mud and cuttings will vary according to rates of penetration. In the upper hole rates of discharge there could be up to 4000 bbls per day and up to 400 bbls per hour. The lower part of the hole may have discharge rates of 20 bbls per day and 1 bbls per hour while drilling.

3. Composition of Discharges

Cuttings are composed of native solids, shale, clays and sands. Mud is composed primarily of Bentonite clay, barite, caustic soda, Lignote, Lignosulfonate salts, native solids, and polymers in water.

4. Basis For Determination of Quantity and Rate of Discharges
Assumed 1.25 (x) hole-volume drilled for washout to estimate cuttings

20"	4 x cuttings for mud discharge
10.75"	3 x cuttings for mud discharge
7.625"	2 x cuttings for mud discharge

5. Plans for Treatment, Storage, Transportation, and Disposal

Oil spots added to mud for stuck pipe will be isolated, containerized in U. S. Coast Guard approved tanks and brought to an approved disposal site on shore. Uncontaminated mud will be discharged.

B. Deck Drainage

1. Quantity of Discharges:

Rain..... 15 day estimate 7,500 BBL
Wash Water..... 15 day estimate 900 BBL

2. Discharge Rate

Rain..... 0-500 BBL/day
Wash water..... 40-60 BBL/day

3. Composition

Deck drainage will consist of primarily of water, soaps and deck soils.

4. Basis for Determination of Quantity and Discharge Rate

Rain Estimate - Wash water volumes used on other rigs.

5. Plans for Treatment Storage Transportation

Deck drainage with oil will be routed to a sump prior to discharge.

Appendix F
Oil Spill Response and Chemical Information

- (A) **Reference** – Regional Plan
- (B) **Statement** – The Petsec Energy Inc. Initial Regional Oil Spill Response Plan (OSRP) was approved June 3, 2002. This plan is available upon request. Activities proposed, under this Development Plan will be covered by the approved Regional OSRP. Worst Case Discharge (WCD) resulting from activities proposed at OCS-G 23762 Lease, West Cameron Block 343 does not supercede the WCD Model (which is West Cameron Block 352 A, OCS-G 2839) in the Petsec Energy Inc. Regional OSRP.
- (C) **OSRO Information:** Should an oil spill occur while operating on OCS-G-2839 Lease, West Cameron Block 352 (surface location for proposed activities at West Cameron Block 343), action will be initiated immediately by the Petsec Energy Inc. Spill Response Team and MSRC/CGA. Clean Gulf Associates maintains facilities and equipment at Intracoastal City, Venice, Grand Isle and Cameron, Louisiana. Texas facilities are at Galveston, Port Aransas, and Texas City. A description of oil spill response equipment and materials is listed in the OSRP Manual, Volume I Section III.

Attachments to Appendix F:

- Worst-case scenario comparison
- OSRP approval letter
- Certification of Response Resources
- Proof of Contractual Agreements

Attachment to Appendix F
Oil Spill Response and Chemical Information

Drilling Rig Storage: (Rowan Middletown).

<u>Type</u> <u>Storage Tank</u>	<u>Tank</u> <u>Capacity</u>	<u>No of Tanks</u>	<u>(BBLS)</u> <u>Total Capacity</u>	<u>(Degrees)</u> <u>Fluid Gravity</u>
#2 Fuel Oil	1,240.5 bbls.	2	2,481	42
(Day Tank)	3000 Gals.	1	71.4	42
Settling Oil	1000 Gals.	1	23.8	42
Emergency	100 Gals.	1	2.4	42

Regional OSRP Comparison (Worst-case Scenario):

<u>Category</u>	<u>Regional OSRP</u>	<u>DOCD/S</u>
Type of Activity.....	Development/Platform.....	Development/Platform
Spill Location (area/block).....	W.Cameron Bk.352.....	W.Cameron Bk. 352
Facility Designation.....	Platform A.....	Platform A
Distance to Nearest Shoreline.....	52 miles.....	52 miles
Volume (BBLS/Day).....	1000.....	1000
Type of Oil.....	Condensate.....	Condensate
API Gravity.....	47 ⁰	47 ⁰

Statement: Since Petsec Energy Inc. has the capability to respond to the worst-case spill scenario included in its regional OSRP approved on June 3, 2002, and since the worst-case scenario determined for out West Cameron Block 343 S/DOCD does not replace the worst-case scenario in our regional OSRP, I hereby certify that Petsec Energy Inc. has the capability to respond, to the maximum extent practicable, to a worst-case discharge, or a substantial threat of such a discharge resulting, from the activities proposed in our West Cameron Block 343 S/DOCD.



United States Department of the Interior

MINERALS MANAGEMENT SERVICE

Gulf of Mexico OCS Region
1201 Elmwood Park Boulevard
New Orleans, Louisiana 70123-2394

RECEIVED
JUN 06 2002
PETSEC ENERGY, INC.

In Reply Refer To: MS 5231

June 3, 2002

Mr. Norman Fakier
Petsec Energy, Inc.
143 Ridgeway Drive, Suite 113
Lafayette, Louisiana 70503-3402

Dear Mr. Fakier:

Your letter dated May 14, 2002, transmitted your initial regional Oil Spill Response Plan (OSRP) for our review. In accordance with 30 CFR 254, the plan is hereby approved.

Please be advised that the review and update of your regional OSRP as required by 30 CFR 254.30 must be submitted no later than July 31, 2004. One copy of the findings of the review including any resulting updates must be submitted to this office for approval.

Sincerely,

Donald C. Howard

Regional Supervisor
Field Operations

cc: Ms. Bea Stong
J. Connor Consulting, Inc.
16225 Park Ten Place, Suite 700
Houston, Texas 77084



PETSEC ENERGY INC.

9-May-02

Mr. Rusty Wright
Minerals Management Service
Attn: Plans Section (MS 5231)
1201 Elmwood Park Boulevard
New Orleans, Louisiana 70123-2394

RE: July 2002 Regional Oil Spill Response Plan

Dear Mr. Wright:

Petsec Energy, Inc. hereby submits one (1) copy of our Regional Oil Spill Response Plan covering operations seaward of the coastline. The Regional Oil Spill Response Plan was written in accordance with 30 CFR 254 and includes information required by the Minerals Management Service (MMS).


CERTIFICATION OF RESPONSE RESOURCES

Petsec Energy, Inc. hereby certifies that we have ensured the availability of private personnel and equipment adequate to respond to the maximum extent practicable to a worst case discharge or substantial threat of such a discharge.

Petsec Energy, Inc., therefore requests authorization to operate without an approved Regional Oil Spill Response Plan for up to two (2) years.

If you have any questions, please contact me or our regulatory consultant in this matter, Ms. Bea Stong, at J. Connor Consulting, Inc. (281) 578-3388. Please copy J. Connor Consulting, Inc. on any correspondence relating to this matter.

Sincerely,



Norman Fakier
Vice President - Operations

PETSEC ENERGY INC.

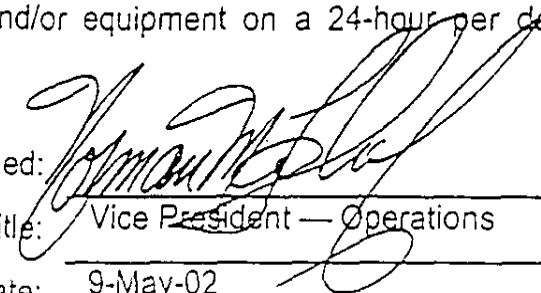
FIGURE D.1 PROOF OF CONTRACTUAL AGREEMENTS

* * * * *

I hereby certify that Petsec Energy, Inc. currently has a contract or membership agreement with the following Service Providers:

Service	Company	Beginning Date	Ending Date
Spill Management Team	OOPS	01-Jul-02	Auto-renewal
Equipment Provider	CGA	01-Jul-02	Auto-renewal
Response Personnel	MSRC	01-Jul-02	Auto-renewal

The subject contract or membership agreement provides immediate access to available personnel and/or equipment on a 24-hour per day basis.

Signed: 

Title: Vice President — Operations

Date: 9-May-02

BEST AVAILABLE COPY

Appendix G
Air Emissions Information

Statement: An Air Quality Review (AQR) is required for this (Supplemental) Development Operations Coordination Document due to Air Quality Screening Question No. 6 being answered "Yes".

Attachments to Appendix G:

- An Air Quality Review report

DOCD AIR QUALITY SCREENING CHECKLIST OMB Control No. xxxx-xxxx
Expiration Date: Pending

COMPANY	Petsec Energy Inc.
AREA	West Cameron, West Addition
BLOCK	343
LEASE	OCS-G 23762
PLATFORM	<i>See Remarks Below</i>
WELL	A-18
COMPANY CONTACT	Norman Fakier
TELEPHONE NO.	(337) 989-1942 Ext. 210
REMARKS	Supplemental DOCD for Block 343, OCS-G 23762, however, surface location for this DOCD is West Cameron Block 352 "A" Platform.

"Yes"	"No"	Air Quality Screening Questions
	N	1. Is the concentration of H ₂ S expected greater than 20 ppm?
	N	2. Is the burning of produced liquids proposed?
	N	3. Is gas flaring or venting which would require Regional Supervisor of Production and Development approval under Subpart K proposed?
	N	4. Does the facility process production from 8 or more active wells?
	N	5. Is the facility within 200km of the Breton Area?
Y		6. Will the proposed activity be collocated at (same surface location), or bridge attached to, a previously approved facility?
	N	7. Is the proposed activity within 25 miles of shore?
	N	8. Are semi-submersible activities involved and is the facility within 75 miles of shore?
	N	9. Are drillship operations involved and is the facility within 145 miles of shore?

If ALL questions are answered "No":

Fill in the information below about your lease term pipelines and submit only this coversheet with your plan.

If ANY question is answered "Yes":

Prepare and submit a full set of spreadsheets with your plan.

LEASE TERM PIPELINE CONSTRUCTION INFORMATION:		
YEAR	NUMBER OF PIPELINES	TOTAL NUMBER OF CONSTRUCTION DAYS
1999		
2000		
2001		
2002	0	
2003		
2004		
2005		
2006		
2007		
2008		
2009		

AIR EMISSION COMPUTATION FACTORS

OMB Control No. xxxx-xxxx

Expiration Date: Pending

Fuel Usage Conversion Factors	Natural Gas Turbines		Natural Gas Engines		Diesel Recip. Engine		REF.	DATE
	SCF/hp-hr	9.524	SCF/hp-hr	7.143	GAL/hp-hr	0.0483		
							AP42 3.2-1	4/76 & 8/84

Equipment/Emission Factors	units	PM	SOx	NOx	VOC	CO	REF.	DATE
NG Turbines	gms/hp-hr		0.00247	1.3	0.01	0.83	AP42 3.2-1& 3.1-1	10/96
NG 2-cycle lean	gms/hp-hr		0.00185	10.9	0.43	1.5	AP42 3.2-1	10/96
NG 4-cycle lean	gms/hp-hr		0.00185	11.8	0.72	1.6	AP42 3.2-1	10/96
NG 4-cycle rich	gms/hp-hr		0.00185	10	0.14	8.6	AP42 3.2-1	10/96
Diesel Recip. < 600 hp.	gms/hp-hr	1	1.468	14	1.12	3.03	AP42 3.3-1	10/96
Diesel Recip. > 600 hp.	gms/hp-hr	0.32	1.468	11	0.33	2.4	AP42 3.4-1	10/96
Diesel Boiler	lbs/bbl	0.084	2.42	0.84	0.008	0.21	AP42 1.3-12,14	9/98
NG Heaters/Boilers/Burners	lbs/mmescf	7.6	0.593	100	5.5	84	AP42 1.4-1, 14-2, & 14	7/98
NG Flares	lbs/mmescf		0.593	71.4	60.3	388.5	AP42 11.5-1	9/91
Liquid Flaring	lbs/bbl	0.42	6.83	2	0.01	0.21	AP42 1.3-1 & 1.3-3	9/98
Tank Vapors	lbs/bbl				0.03		E&P Forum	1/93
Fugitives	lbs/hr/comp.				0.0005		API Study	12/93
Glycol Dehydrator Vent	lbs/mmescf				6.6		La. DEQ	1991
Gas Venting	lbs/scf				0.0034			

Sulfur Content Source	Value	Units
Fuel Gas	3.33	ppm
Diesel Fuel	0.4	% weight
Produced Gas(Flares)	3.33	ppm
Produced Oil (Liquid Flaring)	1	% weight

AIR EMISSION CALCULATIONS - FIRST YEAR

OMB Control No. xxxx-xxxx

Expiration Date: Pending

COMPANY	AREA	BLOCK	LEASE	PLATFORM	WELL	CONTACT	PHONE	REMARKS								
Petsec Energy Inc.	West Cameron, West Addition	343	OCS-G 23782	See Remarks Below	A-18	Norman Fakier	(337) 989-1942 Ext. 210									
OPERATIONS	EQUIPMENT	RATING	MAX. FUEL	ACT. FUEL	RUN TIME		MAXIMUM POUNDS PER HOUR					ESTIMATED TONS				
	Diesel Engines	HP	GAL/HR	GAL/D												
	Nat. Gas Engines	HP	SCF/HR	SCF/D												
	Burners	MMBTU/HR	SCF/HR	SCF/D	HR/D	DAYS	PM	SOx	NOx	VOC	CO	PM	SOx	NOx	VOC	CO
DRILLING AND COMPLETION:	(3) PRIME MOVER>600hp diesel	4950	239.085	5738.04	24	15	0.00	0.00	0.00	0.00	0.00	0.00	0.00	0.00	0.00	0.00
	BURNER diesel		0	0.00			3.49	16.01	119.93	3.60	26.17	0.63	2.88	21.59	0.65	4.71
	(2) Crane < 600hp diesel	400	19.32	463.68	10	15	0.00	0.00	0.00	0.00	0.00	0.00	0.00	0.00	0.00	0.00
	Emergency Gen. <600hp diesel	425	20.5275	492.66	1	15	0.00	0.00	0.00	0.00	0.00	0.00	0.00	0.00	0.00	0.00
	Cementing Unit <600hp diesel	800	38.64	927.36	2	6	0.00	0.00	0.00	0.00	0.00	0.00	0.00	0.00	0.00	0.00
	Crew Boat > 600hp diesel	2000	96.6	2318.40	8	6	0.00	0.00	0.00	0.00	0.00	0.00	0.00	0.00	0.00	0.00
	Supply Boat > 600hp diesel	2500	120.75	2898.00	12	9	0.00	0.00	0.00	0.00	0.00	0.00	0.00	0.00	0.00	0.00
	(3) Tugs > 600hp diesel	18200	782.46	18779.04	24	2	0.00	0.00	0.00	0.00	0.00	0.00	0.00	0.00	0.00	0.00
							1.76	8.08	60.57	1.82	13.22	0.10	0.44	3.27	0.10	0.71
							11.42	52.38	392.51	11.78	85.64	0.27	1.26	9.42	0.28	2.06
PIPELINE INSTALLATION:	PIPELINE LAY BARGE diesel		0	0.00			0.00	0.00	0.00	0.00	0.00	0.00	0.00	0.00	0.00	0.00
	SUPPORT VESSEL diesel		0	0.00			0.00	0.00	0.00	0.00	0.00	0.00	0.00	0.00	0.00	0.00
	PIPELINE BURY BARGE diesel		0	0.00			0.00	0.00	0.00	0.00	0.00	0.00	0.00	0.00	0.00	0.00
	SUPPORT VESSEL diesel		0	0.00			0.00	0.00	0.00	0.00	0.00	0.00	0.00	0.00	0.00	0.00
	VESSELS>600hp diesel(crew)		0	0.00			0.00	0.00	0.00	0.00	0.00	0.00	0.00	0.00	0.00	0.00
	VESSELS>600hp diesel(supply)		0	0.00			0.00	0.00	0.00	0.00	0.00	0.00	0.00	0.00	0.00	0.00
FACILITY INSTALLATION:	DERRICK BARGE diesel		0	0.00			0.00	0.00	0.00	0.00	0.00	0.00	0.00	0.00	0.00	0.00
	MATERIAL TUG diesel		0	0.00			0.00	0.00	0.00	0.00	0.00	0.00	0.00	0.00	0.00	0.00
	VESSELS>600hp diesel(crew)		0	0.00			0.00	0.00	0.00	0.00	0.00	0.00	0.00	0.00	0.00	0.00
	VESSELS>600hp diesel(supply)		0	0.00			0.00	0.00	0.00	0.00	0.00	0.00	0.00	0.00	0.00	0.00
PRODUCTION:																
W. Cameron Block 362 "A" PF	(1) PF Crane < 600hp diesel	100	4.83	115.92	6	30	0.22	0.32	3.08	0.25	0.67	0.02	0.03	0.28	0.02	0.06
	(1) Generator < 600hp diesel	75	3.6225	86.94	24	30	0.17	0.24	2.31	0.19	0.50	0.06	0.09	0.83	0.07	0.18
	(2) Generator - natural gas	300	2142.9	51428.60	24	15		0.00	6.61	0.09	5.68		0.00	1.19	0.02	1.02
	NG Compressor (4-cyc L-B)	1100	7857.3	188575.20	24	15		0.00	28.59	1.74	3.88		0.00	5.15	0.31	0.70
	BURNER nat gas	1.5	1428.57	34285.71	24	15	0.01	0.00	0.14	0.01	0.12	0.00	0.00	0.03	0.00	0.02
	MISC.	BPD	SCF/HR	COUNT												
	TANK-	0			0	0				0.00	0.00				0.00	
	FLARE-		0		0	0		0.00	0.00	0.00	0.00		0.00	0.00	0.00	0.00
	PROCESS VENT-		0		0	0				0.00					0.00	
	FUGITIVES-			2000.0		15				1.00					0.18	
DRILLING WELL TEST	GLYCOL STILL VENT-		833333		24	15				5.50					0.99	
	OIL BURN	0			0	0	0.00	0.00	0.00	0.00	0.00	0.00	0.00	0.00	0.00	0.00
	GAS FLARE		0		0	0		0.00	0.00	0.00	0.00		0.00	0.00	0.00	0.00
2002 YEAR TOTAL							22.06	88.77	712.32	31.43	167.29	1.20	4.97	44.09	2.75	9.97
EXEMPTION CALCULATION	DISTANCE FROM LAND IN MILES											1714.95	1714.95	1714.95	1714.95	47063.45
	51.5															

BEST AVAILABLE COPY

AIR EMISSION CALCULATIONS - FIRST YEAR

OMB Control No. xxxx-xxxx

Expiration Date: Pending

COMPANY	AREA	BLOCK	LEASE	PLATFORM	WELL	CONTACT					PHONE	REMARKS				
Petsec Energy Inc.	West Cameron, West Addition	343	OCS-G 23762	See Remarks Below	A-18		Norman Faldier				(337) 989-1942	#REF!				
OPERATIONS	EQUIPMENT	RATING	MAX. FUEL	ACT. FUEL	RUN TIME		MAXIMUM POUNDS PER HOUR					ESTIMATED TONS				
	Diesel Engines	HP	GAL/HR	GAL/D												
	Nat. Gas Engines	HP	SCF/HR	SCF/D												
	Burners	MMBTU/HR	SCF/HR	SCF/D	HR/D	DAYS	PM	SOx	NOx	VOC	CO	PM	SOx	NOx	VOC	CO
Drilling and Completion Rig		0	0	0.00			0.00	0.00	0.00	0.00	0.00	0.00	0.00	0.00	0.00	0.00
		0	0	0.00			0.00	0.00	0.00	0.00	0.00	0.00	0.00	0.00	0.00	0.00
		0	0	0.00			0.00	0.00	0.00	0.00	0.00	0.00	0.00	0.00	0.00	0.00
		0	0	0.00			0.00	0.00	0.00	0.00	0.00	0.00	0.00	0.00	0.00	0.00
		0	0	0.00			0.00	0.00	0.00	0.00	0.00	0.00	0.00	0.00	0.00	0.00
N/A	BURNER diesel						0.00	0.00	0.00	0.00	0.00	0.00	0.00	0.00	0.00	0.00
	(2) Crane < 600hp diesel	0	0	0.00			0.00	0.00	0.00	0.00	0.00	0.00	0.00	0.00	0.00	0.00
	Emergency Gen. <600hp diesel	0	0	0.00			0.00	0.00	0.00	0.00	0.00	0.00	0.00	0.00	0.00	0.00
	Cementing Unit <600hp diesel	0	0	0.00			0.00	0.00	0.00	0.00	0.00	0.00	0.00	0.00	0.00	0.00
	Crew Boat > 600hp diesel	0	0	0.00			0.00	0.00	0.00	0.00	0.00	0.00	0.00	0.00	0.00	0.00
	Supply Boat > 600hp diesel	0	0	0.00			0.00	0.00	0.00	0.00	0.00	0.00	0.00	0.00	0.00	0.00
	(3) Tugs > 600hp diesel	0	0	0.00			0.00	0.00	0.00	0.00	0.00	0.00	0.00	0.00	0.00	0.00
		0	0	0.00			0.00	0.00	0.00	0.00	0.00	0.00	0.00	0.00	0.00	0.00
PIPELINE INSTALLATION:	PIPELINE LAY BARGE diesel		0	0.00			0.00	0.00	0.00	0.00	0.00	0.00	0.00	0.00	0.00	0.00
	SUPPORT VESSEL diesel		0	0.00			0.00	0.00	0.00	0.00	0.00	0.00	0.00	0.00	0.00	0.00
	PIPELINE BURY BARGE diesel		0	0.00			0.00	0.00	0.00	0.00	0.00	0.00	0.00	0.00	0.00	0.00
	SUPPORT VESSEL diesel		0	0.00			0.00	0.00	0.00	0.00	0.00	0.00	0.00	0.00	0.00	0.00
	VESSELS>600hp diesel(crew)		0	0.00			0.00	0.00	0.00	0.00	0.00	0.00	0.00	0.00	0.00	0.00
	VESSELS>600hp diesel(supply)		0	0.00			0.00	0.00	0.00	0.00	0.00	0.00	0.00	0.00	0.00	0.00
FACILITY INSTALLATION:	DERRICK BARGE diesel		0	0.00			0.00	0.00	0.00	0.00	0.00	0.00	0.00	0.00	0.00	0.00
	MATERIAL TUG diesel		0	0.00			0.00	0.00	0.00	0.00	0.00	0.00	0.00	0.00	0.00	0.00
	VESSELS>600hp diesel(crew)		0	0.00			0.00	0.00	0.00	0.00	0.00	0.00	0.00	0.00	0.00	0.00
	VESSELS>600hp diesel(supply)		0	0.00			0.00	0.00	0.00	0.00	0.00	0.00	0.00	0.00	0.00	0.00
PRODUCTION:																
W. Cameron Block 352 "A" PF	(1) PF Crane < 600hp diesel	100	4.83	115.92	6	30	0.22	0.32	3.08	0.25	0.67	0.02	0.03	0.28	0.02	0.06
	(1) Generator < 600hp diesel	75	3.6225	86.94	24	30	0.17	0.24	2.31	0.19	0.50	0.06	0.09	0.83	0.07	0.18
	(2) Generator - natural gas	300	2142.9	51429.60	24	30		0.00	6.61	0.09	5.68		0.00	2.38	0.03	2.05
	NG Compressor (4-cyc L-B)	1100	7857.3	188575.20	24	365		0.00	28.59	1.74	3.88		0.02	125.23	7.64	16.98
	BURNER nat gas	1.5	1428.57	34285.71	24	365	0.01	0.00	0.14	0.01	0.12	0.05	0.00	0.63	0.03	0.53
	MISC.	BPD	SCF/HR	COUNT												
	TANK-	0			0	0				0.00					0.00	
	FLARE-		0		0	0		0.00	0.00	0.00	0.00		0.00	0.00	0.00	0.00
	PROCESS VENT-		0		0	0				0.00					0.00	
	FUGITIVES-			2000.0		365				1.00				4.38		
	GLYCOL STILL VENT-		833333		24	365				5.50				24.09		
DRILLING WELL TEST	OIL BURN	0			0	0	0.00	0.00	0.00	0.00	0.00	0.00	0.00	0.00	0.00	
	GAS FLARE		0		0	0		0.00	0.00	0.00	0.00		0.00	0.00	0.00	
2003 YEAR TOTAL							0.40	0.57	40.74	8.78	10.85	0.13	0.14	129.34	36.27	19.79
EXEMPTION CALCULATION	DISTANCE FROM LAND IN MILES											1714.95	1714.95	1714.95	1714.95	47063.45
	51.5															

AIR EMISSION CALCULATIONS - FIRST YEAR

OMB Control No. xxxx-xxxx

Expiration Date: Pending

COMPANY	AREA	BLOCK	LEASE	PLATFORM	WELL	CONTACT					PHONE	REMARKS				
Petsec Energy Inc.	West Cameron, West Addition	343	OCS-G 23762	See Remarks Below	A-18		Norman Fakier			(337) 989-1942	#REF!					
OPERATIONS	EQUIPMENT	RATING	MAX. FUEL	ACT. FUEL	RUN TIME		MAXIMUM POUNDS PER HOUR					ESTIMATED TONS				
	Diesel Engines	HP	GAL/HR	GAL/D												
	Net Gas Engines	HP	SCF/HR	SCF/D												
	Burners	MMBTU/HR	SCF/HR	SCF/D	HR/D	DAYS	PM	SOx	NOx	VOC	CO	PM	SOx	NOx	VOC	CO
Drilling and Completion Rig		0	0	0.00			0.00	0.00	0.00	0.00	0.00	0.00	0.00	0.00	0.00	0.00
		0	0	0.00			0.00	0.00	0.00	0.00	0.00	0.00	0.00	0.00	0.00	0.00
		0	0	0.00			0.00	0.00	0.00	0.00	0.00	0.00	0.00	0.00	0.00	0.00
		0	0	0.00			0.00	0.00	0.00	0.00	0.00	0.00	0.00	0.00	0.00	0.00
		0	0	0.00			0.00	0.00	0.00	0.00	0.00	0.00	0.00	0.00	0.00	0.00
N/A	BURNER diesel						0.00	0.00	0.00	0.00	0.00	0.00	0.00	0.00	0.00	0.00
	(2) Crane < 600hp diesel	0	0	0.00			0.00	0.00	0.00	0.00	0.00	0.00	0.00	0.00	0.00	0.00
	Emergency Gen. <600hp diesel	0	0	0.00			0.00	0.00	0.00	0.00	0.00	0.00	0.00	0.00	0.00	0.00
	Cementing Unit <600hp diesel	0	0	0.00			0.00	0.00	0.00	0.00	0.00	0.00	0.00	0.00	0.00	0.00
	Crew Boat > 600hp diesel	0	0	0.00			0.00	0.00	0.00	0.00	0.00	0.00	0.00	0.00	0.00	0.00
	Supply Boat > 600hp diesel	0	0	0.00			0.00	0.00	0.00	0.00	0.00	0.00	0.00	0.00	0.00	0.00
	(3) Tugs > 600hp diesel	0	0	0.00			0.00	0.00	0.00	0.00	0.00	0.00	0.00	0.00	0.00	0.00
PIPELINE INSTALLATION:	PIPELINE LAY BARGE diesel		0	0.00			0.00	0.00	0.00	0.00	0.00	0.00	0.00	0.00	0.00	0.00
	SUPPORT VESSEL diesel		0	0.00			0.00	0.00	0.00	0.00	0.00	0.00	0.00	0.00	0.00	0.00
	PIPELINE BURY BARGE diesel		0	0.00			0.00	0.00	0.00	0.00	0.00	0.00	0.00	0.00	0.00	0.00
	SUPPORT VESSEL diesel		0	0.00			0.00	0.00	0.00	0.00	0.00	0.00	0.00	0.00	0.00	0.00
	VESSELS>600hp diesel(crew)		0	0.00			0.00	0.00	0.00	0.00	0.00	0.00	0.00	0.00	0.00	0.00
	VESSELS>600hp diesel(supply)		0	0.00			0.00	0.00	0.00	0.00	0.00	0.00	0.00	0.00	0.00	0.00
FACILITY INSTALLATION:	DERRICK BARGE diesel		0	0.00			0.00	0.00	0.00	0.00	0.00	0.00	0.00	0.00	0.00	0.00
	MATERIAL TUG diesel		0	0.00			0.00	0.00	0.00	0.00	0.00	0.00	0.00	0.00	0.00	0.00
	VESSELS>600hp diesel(crew)		0	0.00			0.00	0.00	0.00	0.00	0.00	0.00	0.00	0.00	0.00	0.00
	VESSELS>600hp diesel(supply)		0	0.00			0.00	0.00	0.00	0.00	0.00	0.00	0.00	0.00	0.00	0.00
PRODUCTION:																
W. Cameron Block 352 "A" PF	(1) PF Crane < 600hp diesel	100	4.83	115.92	6	20	0.22	0.32	3.08	0.25	0.67	0.01	0.02	0.19	0.01	0.04
	(1) Generator < 600hp diesel	75	3.6225	86.94	24	20	0.17	0.24	2.31	0.19	0.50	0.04	0.06	0.56	0.04	0.12
	(2) Generator - natural gas	300	2142.9	51429.60	24	20		0.00	6.61	0.09	5.68		0.00	1.59	0.02	1.36
	NG Compressor (4-cyc L-B)	1100	7857.3	188575.20	24	198		0.00	28.59	1.74	3.88		0.01	67.93	4.14	9.21
	BURNER nat gas	1.5	1428.57	34285.71	24	198	0.01	0.00	0.14	0.01	0.12	0.03	0.00	0.34	0.02	0.29
	MISC.	BPD	SCF/HR	COUNT												
	TANK-	0			0	0				0.00					0.00	
	FLARE-		0		0	0		0.00	0.00	0.00	0.00		0.00	0.00	0.00	0.00
	PROCESS VENT-		0		0	0				0.00					0.00	
	FUGITIVES-			2000.0		198				1.00					2.38	
DRILLING WELL TEST	GLYCOL STILL VENT-		833333		24	198				5.50					13.07	
	OIL BURN	0			0	0	0.00	0.00	0.00	0.00	0.00	0.00	0.00	0.00	0.00	0.00
	GAS FLARE		0		0	0		0.00	0.00	0.00	0.00		0.00	0.00	0.00	0.00
2004 YEAR TOTAL																
							0.40	0.57	40.74	8.78	10.85	0.08	0.09	70.60	19.69	11.02
EXEMPTION CALCULATION																
DISTANCE FROM LAND IN MILES												1714.95	1714.95	1714.95	1714.95	47063.45
51.5																

AIR EMISSION CALCULATIONS

OMB Control No. xxxx-xxxx

Expiration Date: Pending

COMPANY	AREA	BLOCK	LEASE	PLATFORM	WELL
Petsec Energy I	West Cameron, West Addition	343	OCS-G 23762	See Remarks Below	A-18
Year	Emitted Substance				
	PM	SOx	NOx	VOC	CO
2002	1.20	4.97	44.09	2.75	9.97
2003	0.13	0.14	129.34	36.27	19.79
2004	0.08	0.09	70.60	19.69	11.02
Allowable	1714.95	1714.95	1714.95	1714.95	47063.45

**Appendix H
Environmental Information**

Statement: An Environmental Report is ***not required*** for this (Supplemental) Development Operations Coordination Document.

Attachments to Appendix H:

- None

BEST AVAILABLE COPY

Appendix I
Coastal Zone Management Consistency Certification Format

Statement: A CZM Consistency Certification for the State Of Louisiana is ***not required*** when an Environmental Report is not required.

Attachments to Appendix I:

- None