



United States Department of the Interior  
BUREAU OF SAFETY AND ENVIRONMENTAL ENFORCEMENT  
Gulf of Mexico OCS Region  
1201 Elmwood Park Boulevard  
New Orleans, LA 70123-2394

Scanning  
Seq 18805  
Row 29184  
New

In Reply Refer To: GE 1035A

New - ROW/BSEE

February 19, 2013

Mr. J. Granger Anderson III  
Vice President - Land  
Energy XXI GOM, LLC  
1021 Main  
Suite 2626  
Houston, TX 77002

Greetings: Mr. J. Granger Anderson III

Reference is made to the following application that has been reviewed by this office:

Application Type: New Right-of-Way Pipeline  
Application Date: January 11, 2013  
Work Description: Create 200-foot wide right-of-way and install, operate, and maintain the following:

A 200-foot wide right-of-way to operate and maintain a 8-inch bi-directional pipeline, 27.99 miles in length, to transport Gas from West Delta Block 73, Platform A through Blocks 92, 91, 102, 103, 104, 114, 113, 124, 125, 126, 129, 128, 145 all in the West Delta Area, through South Pass Block 94 to South Pass Block 93, Platform A.

Assigned Right-of-Way Number: OCS-G29184  
Assigned Segment Number: 18805

Pursuant to 43 U.S.C. 1334(e) and 30 CFR 250.1000(d), your application is hereby approved.

Assigned MAOP (psi): 1440  
MAOP Determination : Valves, Flanges

The Right-of-Way No. OCS-G29184 is described as follows: A 200-foot wide right-of-way to operate and maintain a 8-inch bi-directional pipeline, 27.99 miles in length, to transport Gas from West Delta Block 73, Platform A through Blocks 92, 91, 102, 103, 104, 114, 113, 124, 125, 126, 129, 128, 145 all in the West Delta Area, through South Pass Block 94 to South Pass Block 93, Platform A.

Please be reminded that, in accordance with 30 CFR 250.1008(a), you must notify the Regional Supervisor at least 48 hours prior to commencing the installation or relocation of a pipeline or conducting a pressure test on the pipeline. Commencement notification(s) should be faxed to (504) 736-2408. In accordance with 30 CFR 250.1008 (b), you are reminded to submit a report to the Regional Supervisor within 90 days after completion of any pipeline construction. Also in accordance with a Letter to Lessees dated April 18, 1991, a copy of the as-built plat(s) must be submitted to the NOAA-National Ocean Service-OCS, Chief, Nautical Data Branch, N/CS26, 1315 East West Highway, Silver Spring, MD, 20910-3282.

Sincerely,



Digitally signed by Nick Wetzel  
DN: cn=Nick Wetzel, o=CAI,  
ou=Regional  
Date: 2013.02.19 17:08:14 -08'00'

Nick Wetzel  
Regional Supervisor  
Regional Field Operations

Scanning  
Seg: 18805  
Row: 29184



1021 Main (One City Centre)  
Suite 2626  
Houston, Texas 77002  
Tel 713-351.3000 Fax 713-351.3300  
[www.energyxxi.com](http://www.energyxxi.com)

January 11, 2013

United States Department of the Interior  
Bureau of Safety and Environmental Enforcement  
1201 Elmwood Park Boulevard  
New Orleans, Louisiana 70123-2394

Minerals Management Service  
**RECEIVED**

JAN 14 2013

Office of Field Operations  
Pipeline Section

**Attn: Ms. Angie Gobert (Pipeline Section Chief)**

**RE:** Application for Right-of-Way Easement for Existing 8-Inch Gs Right-of-Way Pipeline (**ROW OCS-G 3655/Segment No. 4990**) Originating at West Delta Block 73, Platform A and Terminating at South Pass Block 93, Platform A, OCS Federal Waters, Gulf of Mexico, Offshore Louisiana

Dear Ms. Gobert:

As required by Section 5(e) of the Outer Continental Shelf Lands Act (67 Stat. 462) (43 U.S.C. 1331), as amended (92 Sta. 629), and in accordance with federal regulations contained in Title 30 CFR Part 250, Subpart J, Energy XXI GOM, LLC ("Energy XXI") is filing this application in quadruplicate for a right-of-way easement two hundred feet in width for the maintenance and operation of the existing 8-inch bi-directional gas right-of-way pipeline originating at West Delta Block 73, Platform A and terminating at South Pass Block 93, Platform A.

This application (and any amendments made hereto) is made with our full knowledge and concurrence with the OCS Lands Act (43 U.S.C. 1331, et.seq.), as amended (P.L. 95-372), including the following: Sec. 5(e) addressing pipeline rights of way, requirements of the Federal Energy Regulatory Commission relating to notice of hearing, transportation and purchase of oil and gas without discrimination; Sec. 5(f)(1) addressing operation of pipelines in accordance with competitive principles, including open and nondiscriminatory access to both owner and non-owner shippers; Sec. 5(f)(2) which may allow exemption of the requirements of Sec. 5(f)(1); Sec. 5(e) addressing the assuring of maximum environmental protection, including the safest practices for pipeline installation; and Sec. 5(f)(1)(B) which may require expansion of throughput capacity of any pipeline except for the Gulf of Mexico or the Santa Barbara Channel.

The subject pipeline Segment No. 4990 was acquired from Exxon Production Company ("Exxon") in 2010. This pipeline was taken out of service prior to the acquisition by Energy XXI. The exact date that the pipeline was placed out of service is unknown, but it appears to be sometime in 2009. The pipeline has product in it and has been pressured up since that time. But it is our understanding that the Right-of-Way OCS-G 3655 has expired.

Energy XXI, therefore requests that a new right-of-way be issued for pipeline segment 4990.

In support of this request, the following information is enclosed:

- 1) Pay.Gov Receipt in the amount of \$2,569.00 covering the application fee
- 2) Non-Discrimination in Employment Form
- 3) Certified Pipeline Route Plat
- 4) Updated Pipeline Safety Flow Schematic

Additionally, the hydrostatic test information and proposed MAOP are as follows:

- 1) Proposed MAOP = 1440 psi
- 2) Hydrostatic Test Pressure = 1800 psi
- 3) Hydrostatic Test Duration = 8 hours

Please refer to your GOM Company Number 2375 for Energy XXI's corporate qualification records.

Energy XXI would appreciate a favorable and expeditious approval of this application. Should there be any questions or if additional information is required, please contact Kay Morgan in this office at 713-351-3048, or by email at [kmorgan@energyxxi.com](mailto:kmorgan@energyxxi.com).

Sincerely,

**Energy XXI GOM, LLC**



J. Granger Anderson III  
Vice President, Land

Enclosures

**UNITED STATES DEPARTMENT OF THE INTERIOR  
BUREAU OF SAFETY AND ENVIRONMENTAL ENFORCEMENT**

**NON-DISCRIMINATION IN EMPLOYMENT**

As a condition precedent to the approval of granting the subject pipeline right-of-way, the grantee, Energy XXI GOM, LLC hereby agrees and consents to the following stipulation which is to be incorporated into the application for said right-of-way.

During the performance of this grant, the grantee agrees as follows:

The grantee shall fully comply with paragraphs (1) through (7) of section 202 of the Executive Order 11246, as amended (reprinted in 41 CFR 60-1.4(a)), which are for the purpose of preventing discrimination against persons on the basis of race, color, religion, sex, or national origin. Paragraphs (1) through (7) of Section 202 of Executive Order 11246, as amended, are incorporated in this grant by reference.

**Energy XXI GOM, LLC**

  
Granger Anderson III  
Vice President, Land

January 11, 2013  
Date

# Online Payment

## Online Payment

### Step 3: Confirm Payment

1 | 2 | 3

Thank you.

Your transaction has been successfully completed.

#### Pay.gov Tracking Information

Application Name: BSEE Pipeline ROW Grant Application - CI/RG

Pay.gov Tracking ID: 2597553D

Agency Tracking ID: 74397684847

Transaction Date and Time: 01/11/2013 12:08 EST

#### Payment Summary

##### Address Information

Account Holder Name: Kay L. Morgan  
 1021 Main  
 Billing Address: Street  
 Billing Address 2: Suite 2626  
 City: Houston  
 State / Province: TX  
 Zip / Postal Code: 77002  
 Country: USA

##### Account Information

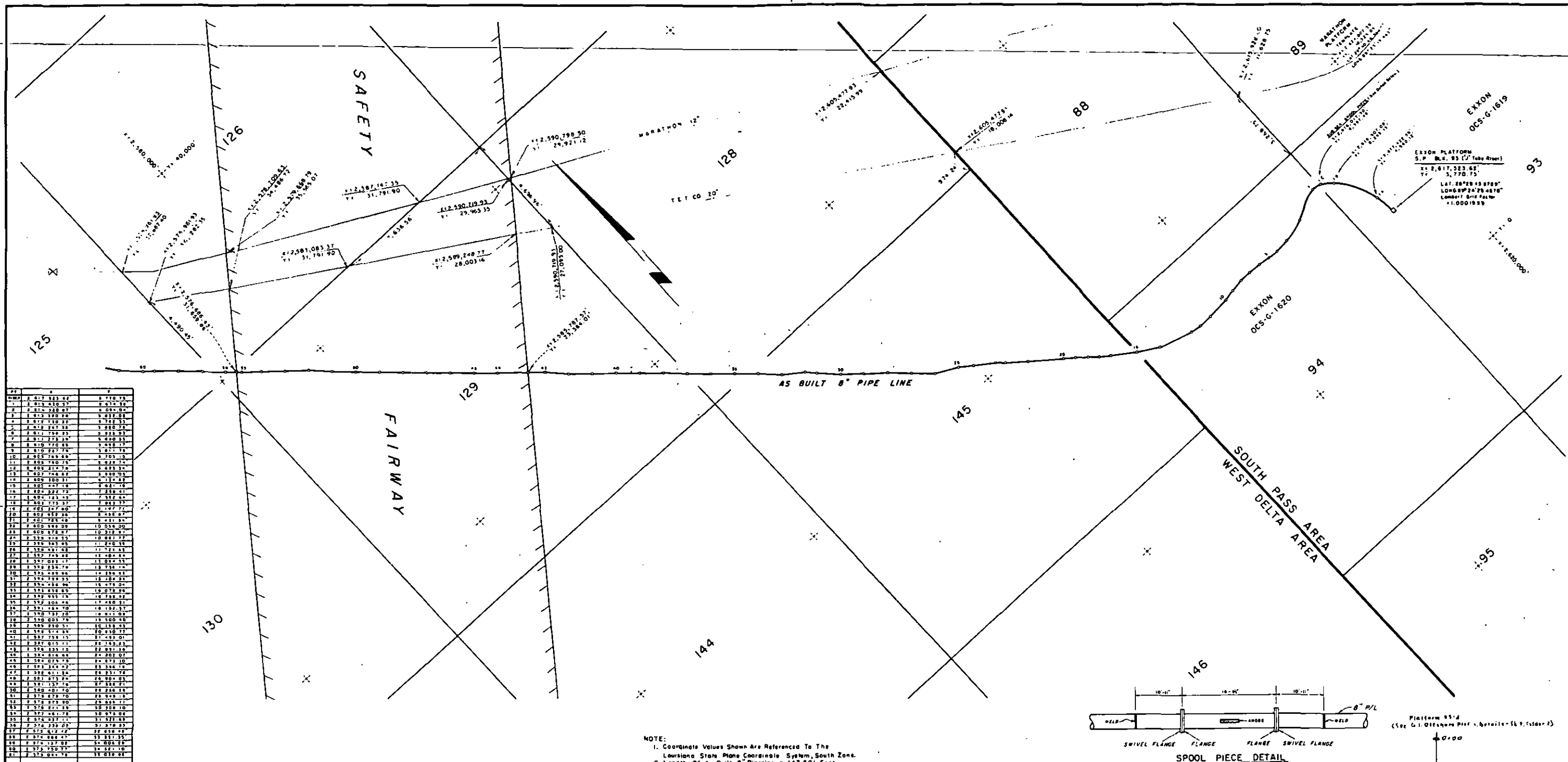
American  
 Card Type: Express  
 Card Number: \*\*\*\*\*1004  
 Region : Gulf of Mexico  
 Contact: 351-3048  
 Company /Co Energy XXI  
 No: GOM, LLC 02375  
 Originating West Delta WD,  
 Area/Block: 73  
 Terminating South Pass SP,  
 Area/Block: 93  
 Pipeline .  
 Length/Rental 27.99  
 Years:

##### Payment Information

Payment Amount: \$2,569.00  
 Transaction Date 01/11/2013  
 and Time: 12:08 EST

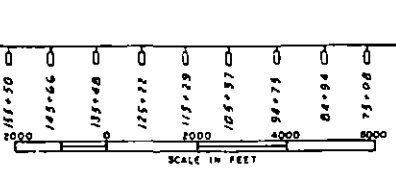
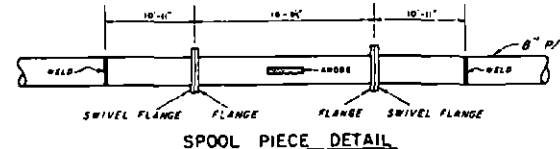
Do you want to  a new plastic card?





STATION	Easting	Northing
1	2 412 825 02	9 770 775
2	2 412 825 07	9 770 775
3	2 412 825 12	9 770 775
4	2 412 825 17	9 770 775
5	2 412 825 22	9 770 775
6	2 412 825 27	9 770 775
7	2 412 825 32	9 770 775
8	2 412 825 37	9 770 775
9	2 412 825 42	9 770 775
10	2 412 825 47	9 770 775
11	2 412 825 52	9 770 775
12	2 412 825 57	9 770 775
13	2 412 826 02	9 770 775
14	2 412 826 07	9 770 775
15	2 412 826 12	9 770 775
16	2 412 826 17	9 770 775
17	2 412 826 22	9 770 775
18	2 412 826 27	9 770 775
19	2 412 826 32	9 770 775
20	2 412 826 37	9 770 775
21	2 412 826 42	9 770 775
22	2 412 826 47	9 770 775
23	2 412 826 52	9 770 775
24	2 412 826 57	9 770 775
25	2 412 827 02	9 770 775
26	2 412 827 07	9 770 775
27	2 412 827 12	9 770 775
28	2 412 827 17	9 770 775
29	2 412 827 22	9 770 775
30	2 412 827 27	9 770 775
31	2 412 827 32	9 770 775
32	2 412 827 37	9 770 775
33	2 412 827 42	9 770 775
34	2 412 827 47	9 770 775
35	2 412 827 52	9 770 775
36	2 412 827 57	9 770 775
37	2 412 828 02	9 770 775
38	2 412 828 07	9 770 775
39	2 412 828 12	9 770 775
40	2 412 828 17	9 770 775
41	2 412 828 22	9 770 775
42	2 412 828 27	9 770 775
43	2 412 828 32	9 770 775
44	2 412 828 37	9 770 775
45	2 412 828 42	9 770 775
46	2 412 828 47	9 770 775
47	2 412 828 52	9 770 775
48	2 412 828 57	9 770 775
49	2 412 829 02	9 770 775
50	2 412 829 07	9 770 775
51	2 412 829 12	9 770 775
52	2 412 829 17	9 770 775
53	2 412 829 22	9 770 775
54	2 412 829 27	9 770 775
55	2 412 829 32	9 770 775
56	2 412 829 37	9 770 775
57	2 412 829 42	9 770 775
58	2 412 829 47	9 770 775
59	2 412 829 52	9 770 775
60	2 412 829 57	9 770 775
61	2 412 830 02	9 770 775
62	2 412 830 07	9 770 775
63	2 412 830 12	9 770 775
64	2 412 830 17	9 770 775
65	2 412 830 22	9 770 775
66	2 412 830 27	9 770 775
67	2 412 830 32	9 770 775
68	2 412 830 37	9 770 775
69	2 412 830 42	9 770 775
70	2 412 830 47	9 770 775
71	2 412 830 52	9 770 775
72	2 412 830 57	9 770 775
73	2 412 831 02	9 770 775
74	2 412 831 07	9 770 775
75	2 412 831 12	9 770 775
76	2 412 831 17	9 770 775
77	2 412 831 22	9 770 775
78	2 412 831 27	9 770 775
79	2 412 831 32	9 770 775
80	2 412 831 37	9 770 775
81	2 412 831 42	9 770 775
82	2 412 831 47	9 770 775
83	2 412 831 52	9 770 775
84	2 412 831 57	9 770 775
85	2 412 832 02	9 770 775
86	2 412 832 07	9 770 775
87	2 412 832 12	9 770 775
88	2 412 832 17	9 770 775
89	2 412 832 22	9 770 775
90	2 412 832 27	9 770 775
91	2 412 832 32	9 770 775
92	2 412 832 37	9 770 775
93	2 412 832 42	9 770 775
94	2 412 832 47	9 770 775
95	2 412 832 52	9 770 775
96	2 412 832 57	9 770 775
97	2 412 833 02	9 770 775
98	2 412 833 07	9 770 775
99	2 412 833 12	9 770 775
100	2 412 833 17	9 770 775

NOTE:  
 1. Coordinate Values Shown Are Referenced To The Louisiana State Plane Coordinate System, South Zone.  
 2. Length Of As Built 8" Pipeline = 147,801 Feet, Or 27.99 Miles, All In Federal Waters.



NOTE:  
 147,348 - 8" Coated w/ Scratchcoat Joints Coated w/ Raychem Thermafit Sleeves  
 117" - 8" Coated w/ 10'-2" & Overcoated w/ 1" Reinf. Concrete Joints  
 Coated w/ Polyken Tape And Concrete.  
 67" - 8" Coated w/ 1/2" Rubber Corrosion Coating & Overcoated w/ 1" Reinf. Concrete. Joints Primed w/ Duralac Epoxy & Coated w/ 1/2" Rubber Corrosion Coating.  
 642" - 8" Coated w/ 1/2" Rubber Corrosion Coating. Joints Primed w/ Duralac Epoxy & Coated w/ 1/2" Rubber Corrosion Coating.  
 12" - 2"  
 26" - 3"  
 30" - 4"  
 142" - 8" Coated With 3 MILS RB 191  
 10" - 10" 1 1/2 MILS RB EE 6866  
 184" - 12" 1 1/4 MILS RB EE 6598 (Grey)

See G.I. Offshore Cath System, Sh. 1 - Folder 2 For Pipe Data.  
 Anode Station Numbers & Main Line Pluses Are Not Oriented.

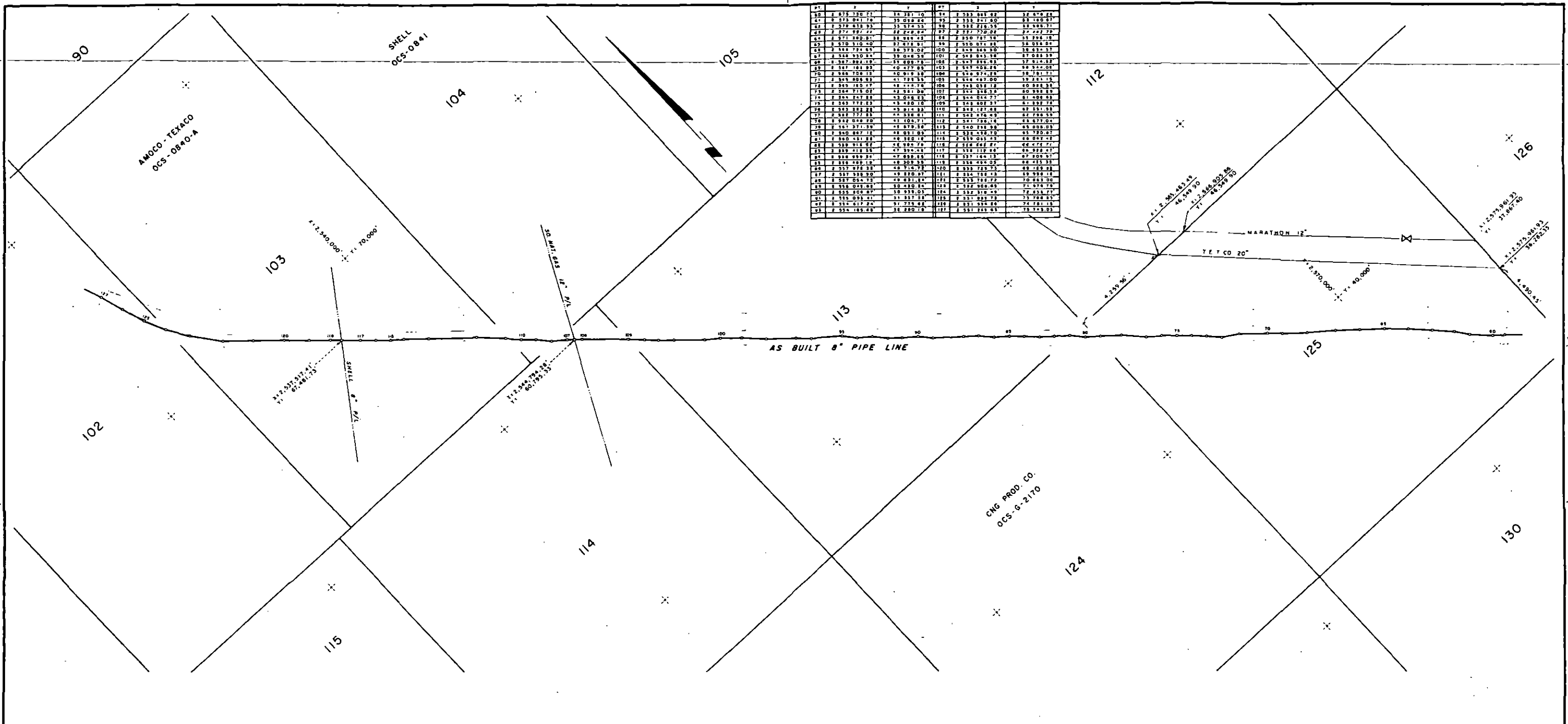
CERTIFIED CORRECT.  
 AUG 15, 1978  
 Shubel J. Tenney, Jr.  
 Registered Land Surveyor No. 43351  
 State of Louisiana  
 John E. Chance & Associates, Inc.



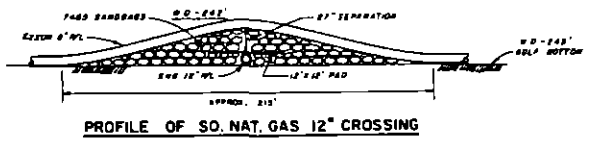
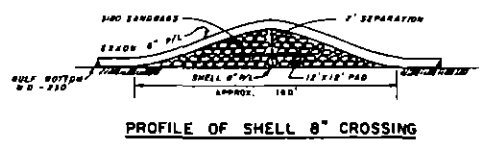
REV	DATE	DESCRIPTION	BY	CHECK	APP
1	11-11-78	AS BUILT MARATHON	JEG		
2	12-11-78	POST INV	JEG		
3	4-27-83	ADDED TET 20" MARATHON 19" APPROX LOC	JHR		

67-ERO  
**EXXON PIPELINE COMPANY**  
 ENGINEERING ROUSTON, TEXAS  
 AS BUILT 8" PIPE LINE  
 FROM SOUTH PASS BLK. 93 PLATFORM  
 TO WEST DELTA BLK. 73-A PLATFORM  
 OFFSHORE LOUISIANA  
 SCALE SHOWN: 1" = 1000'  
 DATE: AUG. 15, 1978  
 SHEET: 1 OF 3

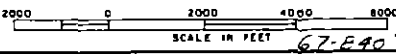




ST.	X	Y	ST.	X	Y
51	2 575 720.71	14 281.10	54	2 533 483.42	12 474.24
52	2 575 041.70	35 058.24	55	2 535 271.60	31 120.57
53	2 572 418.93	35 574.53	56	2 532 218.55	32 999.71
54	2 571 222.77	22 222.22	57	2 531 720.02	22 222.72
55	2 571 182.81	18 888.89	58	2 530 727.58	15 222.18
56	2 570 310.40	17 475.91	59	2 530 071.88	28 036.54
57	2 568 774.81	38 375.00	60	2 528 869.20	38 431.37
58	2 568 520.34	39 044.38	61	2 528 865.38	37 028.59
59	2 567 882.19	19 825.78	62	2 527 825.93	37 914.32
60	2 567 181.83	40 477.83	63	2 527 428.25	38 324.04
61	2 566 720.13	40 819.38	64	2 527 074.22	39 121.71
62	2 565 495.93	41 723.35	65	2 526 422.00	39 211.15
63	2 565 180.47	42 224.78	66	2 526 038.12	40 888.38
64	2 564 715.07	42 241.06	67	2 525 388.54	40 982.59
65	2 564 241.81	43 028.83	68	2 524 866.77	41 408.91
66	2 563 772.23	43 420.10	69	2 524 607.37	41 892.28
67	2 563 283.28	43 274.32	70	2 524 127.88	42 351.58
68	2 562 775.83	44 238.81	71	2 523 816.49	42 728.55
69	2 562 342.20	43 104.71	72	2 523 726.14	43 677.04
70	2 561 371.59	43 879.58	73	2 523 218.98	43 028.23
71	2 560 847.12	48 031.84	74	2 522 438.12	45 729.27
72	2 560 181.81	48 182.12	75	2 521 935.45	46 041.42
73	2 559 315.97	46 884.79	76	2 521 666.21	46 472.21
74	2 558 219.58	47 394.41	77	2 521 112.64	46 922.47
75	2 558 089.21	47 589.85	78	2 520 164.13	47 408.91
76	2 557 482.19	48 309.53	79	2 520 424.05	48 415.33
77	2 557 076.38	48 714.72	80	2 520 725.25	48 189.22
78	2 556 054.73	48 451.84	81	2 520 164.13	48 943.00
79	2 556 049.01	30 480.84	82	2 519 908.63	47 874.78
80	2 555 205.87	30 575.03	83	2 519 319.49	47 458.77
81	2 555 093.41	31 331.22	84	2 518 822.18	47 788.57
82	2 554 617.24	31 778.68	85	2 518 335.84	47 181.18
83	2 554 188.48	32 220.10	86	2 518 185.63	47 243.03

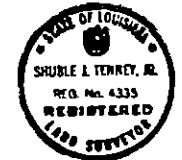


- 1111+60
- 1106+10
- 1177+31
- 1167+23
- 1157+18
- 1147+37
- 1136+80
- 1127+08
- 1116+87
- 1106+86
- 1096+74
- 1086+46
- 1076+23
- 1067+43
- 1056+06
- 1045+37
- 1035+69
- 1025+45
- 1014+88
- 1005+06
- 994+56
- 984+16
- 974+12
- 963+11
- 953+93
- 943+93
- 933+64
- 923+60
- 913+98
- 903+38
- 892+91
- 882+90
- 872+75
- 862+41
- 852+45
- 842+38
- 832+18
- 821+64
- 812+11
- 802+01
- 791+72
- 781+55
- 771+65
- 761+00
- 751+52
- 741+20
- 730+90
- 720+77
- 710+36
- 700+80
- 690+05
- 678+76
- 669+33
- 659+76
- 649+14
- 638+38
- 628+14
- 617+64
- 607+39
- 596+35
- 586+86



CERTIFIED CORRECT.  
AUG. 15, 1978

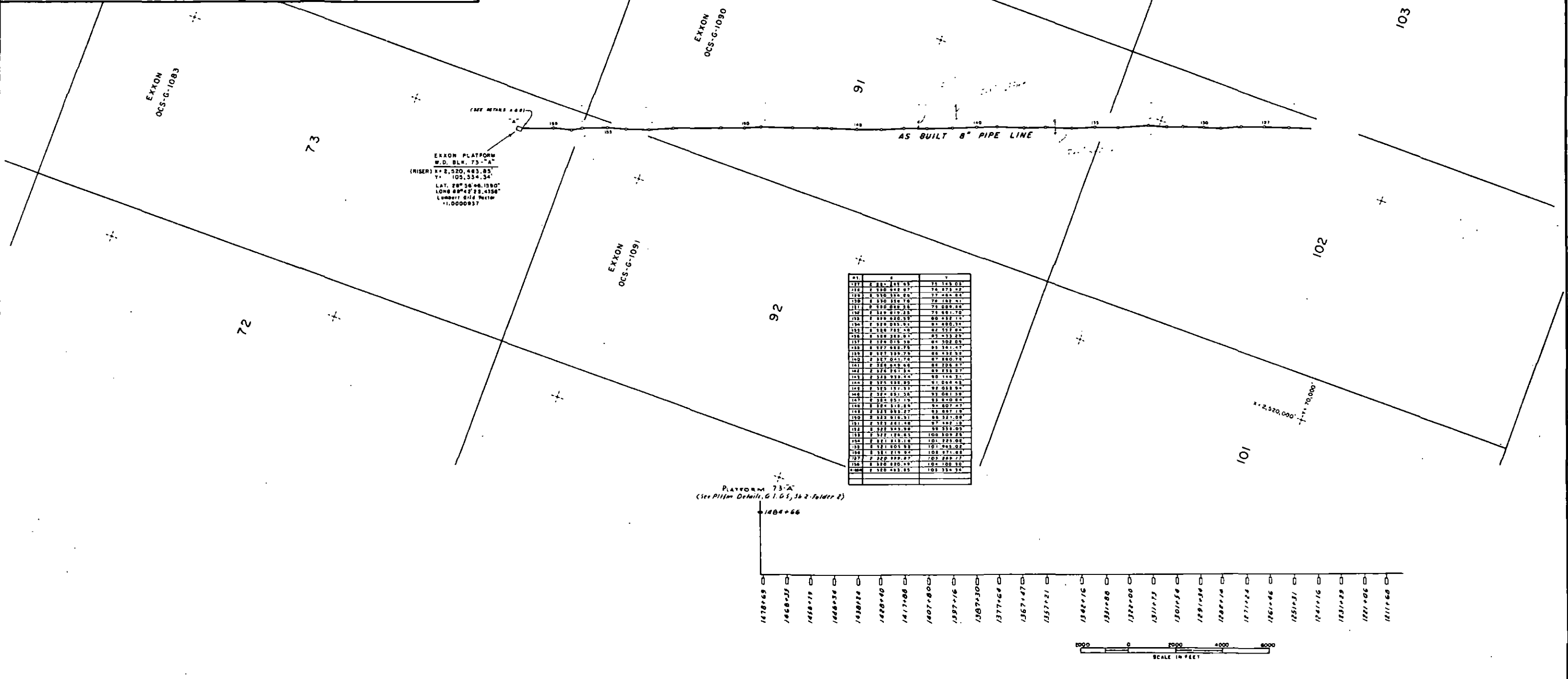
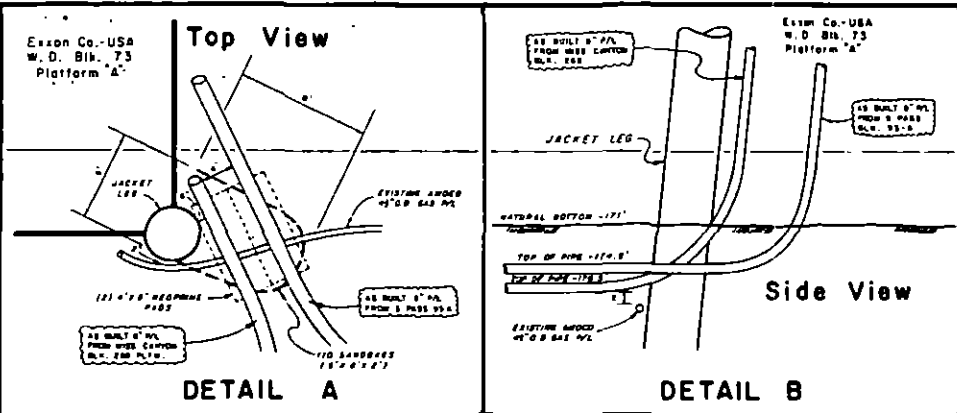
*Shuble & Tenney, Jr.*  
Registered Land Surveyor No. 4335  
State of Louisiana  
John E. Chance & Associates, Inc.



REV.	DATE	DESCRIPTION	DRAWN	CHECK	APPROV.
1-11-78		Update As Built Information	JED	WJC	
10-17-79		Post In.	JED		
4-27-83		ADDED T.E.T. 20" MARATHON 12" (APPROX LOC 1)	HRC		

EXXON PIPELINE COMPANY	
ENGINEERING	HOUSTON, TEXAS
AS BUILT 8" PIPE LINE FROM SOUTH PASS BLK. 93 PLATFORM TO WEST DELTA BLK. 73-A PLATFORM OFFSHORE LOUISIANA	
SCALE SHOWN	E-
DATE	AUG. 15, 1978
REV.	2 OF 3



ST.	B	D	T
101	2 331.121.01	75	123.01
102	2 330.842.07	74	479.22
103	2 330.325.80	77	484.84
104	2 330.281.78	78	182.71
105	2 330.280.38	78	089.84
106	2 329.819.25	78	481.70
107	2 329.820.53	80	232.74
108	2 329.285.87	81	022.71
109	2 328.785.48	82	572.84
110	2 328.280.87	82	452.27
111	2 328.275.38	84	302.08
112	2 327.828.75	85	341.07
113	2 327.329.79	86	432.58
114	2 327.024.78	87	480.72
115	2 326.845.46	88	208.47
116	2 326.267.84	88	258.37
117	2 325.930.44	88	114.31
118	2 325.185.85	90	048.83
119	2 325.187.31	92	088.84
120	2 324.851.38	93	081.38
121	2 324.851.19	93	440.84
122	2 324.518.28	94	407.07
123	2 323.893.27	93	487.18
124	2 323.876.51	88	321.08
125	2 323.241.08	87	187.18
126	2 322.948.98	88	358.03
127	2 322.176.81	100	104.73
128	2 321.215.18	101	225.08
129	2 321.401.98	101	463.02
130	2 321.278.84	108	971.88
131	2 320.725.07	102	228.77
132	2 320.230.19	104	100.10
133	2 320.493.85	101	334.34

- 1478+63
- 1468+55
- 1458+47
- 1448+38
- 1438+29
- 1428+20
- 1417+10
- 1407+00
- 1397+16
- 1387+30
- 1377+64
- 1367+97
- 1357+21
- 1342+16
- 1331+88
- 1322+00
- 1311+73
- 1301+58
- 1291+38
- 1281+14
- 1271+24
- 1261+46
- 1251+31
- 1241+16
- 1231+29
- 1221+06
- 1211+60



CERTIFIED CORRECT.  
AUG. 15, 1978

*Shuble & Tenney, Jr.*  
Registered Land Surveyor No. 4335  
State of Louisiana  
John E. Chance & Associates, Inc.



REV.	DATE	DESCRIPTION	DRAWN	CHECK	APPD.
1-11-78		Update AS BUILT information	JES	JED	JES
10-17-79		Asst Inv.	JED		

67-840

**EXXON PIPELINE COMPANY**  
HOUSTON, TEXAS

ENGINEERING

AS BUILT 8" PIPE LINE  
FROM SOUTH PASS BLK. 93 PLATFORM  
TO WEST DELTA BLK. 73-A PLATFORM  
OFFSHORE LOUISIANA

SCALE: 8"=100'  
DATE: AUG. 15, 1978  
SHEET: 3 OF 3