

UNITED STATES
DEPARTMENT OF THE INTERIOR
MINERALS MANAGEMENT SERVICE

SUNDRY NOTICES AND REPORTS ON WELLS

(Do not use this form for proposals to drill or to deepen or plug back to a different reservoir.)

Use Form MMS-331-C for such proposals.)

1. oil well gas well other **EXPLORATORY**

2. NAME OF OPERATOR
UMC PETROLEUM CORPORATION

3. ADDRESS OF OPERATOR (Where form is completed)
1201 LOUISIANA, SUITE 1400, HOUSTON, TEXAS 77002

4. LOCATION OF WELL (Report location in accordance with instructions* and item 16)

AT SURFACE: **100' FNL & 7150' FWL**
AT TOP PROD. INTERVAL:
AT TOTAL DEPTH: **STRAIGHT HOLE**

5. LEASE NO.
OCS-G 8724

6. AREA & BLOCK
SOUTH TIMBALIER BLOCK 228

7. WELL NO.
#1

8. UNIT AGREEMENT
N/A

9. FIELD
WILDCAT

10.
**EXPLORATION [X]
DEVELOPMENT []**

11. ADJACENT STATE
LOUISIANA

12. API NO.
17-716-40186

13. ELEVATIONS
RKB **99** DF

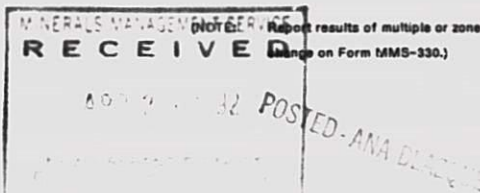
14. WATER DEPTH
202'

15. CHECK APPROPRIATE BOX TO INDICATE NATURE OF NOTICE, REPORT, OR OTHER DATA

REQUEST FOR APPROVAL TO:

SUBSEQUENT REPORT OF:

ACIDIZE	[]	[]
REPAIR WELL	[]	[]
PULL OR ALTER CASING	[]	[]
MULTIPLE COMPLETE	[]	[]
CHANGE ZONES	[]	[]
PERFORATE	[]	[]
PERMANENT ABANDONMENT	[]	[]
TEMPORARY ABANDONMENT	[]	[]
ARTIFICIAL LIFT	[]	[]
Other CHANGE IN DIVERTER SYSTEM	[X]	[X]



16. DESCRIBE PROPOSED OR COMPLETED OPERATIONS (Clearly state all pertinent details, and give pertinent dates, including estimated date of starting any proposed work. If well is directionally drilled, give subsurface locations and measured and true vertical depths for all markers and zones pertinent to this work.)

NEW ORLEANS DISTRICT

SEE ATTACHED FOR DIVERTER SCHEMATIC.

PROPRIETARY DATA

Subsurface Safety Valve Manu. and Type _____ Set @ _____

17. I hereby certify that the foregoing is true and correct

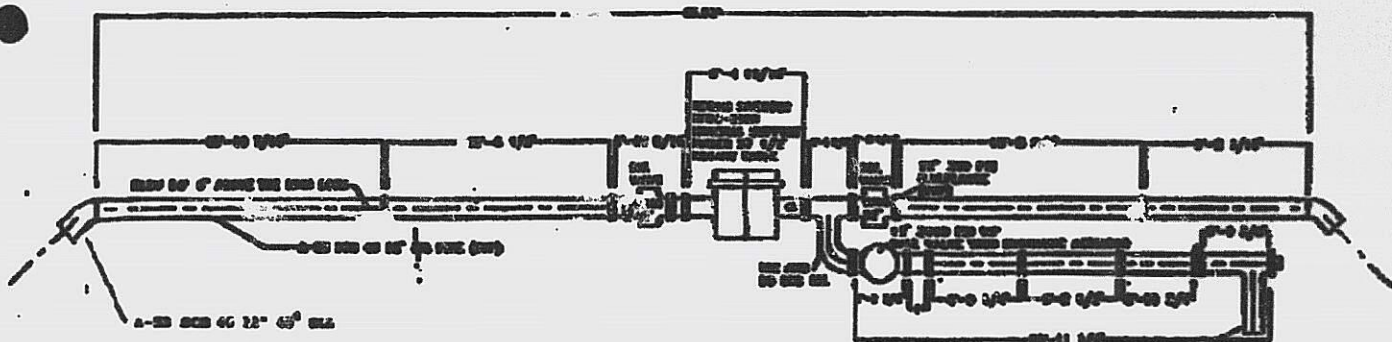
SIGNED JORDAN McNAY TITLE MANAGER, DRILLING & PRODUCTION DATE 04/28/92

(This space for Federal or State office use)

APPROVED (Orig. Sgd.) Lars Herbst TITLE _____ DATE _____

CONDITIONS OF APPROVAL, IF ANY.

BEST AVAILABLE COPY



PIPE LAYING FROM PLATFORM TOWARDS THE ROW OF THE MILL
(SECTION AA)

PIPE END
TO BE CONNECTED
BY C-48 200 40 PWC (20)

BEST AVAILABLE COPY



AFT EDGE OF THE HULL

TOTRL P. 83

CANTILEVER BEAM WED L

CANTILEVER BEAM WED C.L.

DIVERTOR PIPING LAYOUT

BOW



12" SCH 40
45° ELL

PIPE (TYP)
12" SCH 40 A-68
FLANGE (TYP)
20 BOLT B-67

PORT DIVERTOR
12" SENCOS
SERIES 000
BALL VALVE

DIVERTOR
HOUSING

12" SENCOS
SERIES 000
BALL VALVE

PIPE (TYP)
12" SCH 40 A-68
FLANGE (TYP)
20 BOLT B-67

12" SCH 40
45° ELL

FLOW LINE ENDS AT THE
END FLANGES VIEW.

12" SENCOS
SERIES 000
BALL VALVE
USED ON FLOW LINE
(SHOWN IN ELEV. VIEW @ SECTION A-A)

PLAN VIEW

BEST AVAILABLE COPY